

10 Chelmsford Way, Melton West, Vic 3337



House For Sale

Tuesday, 30 January 2024

10 Chelmsford Way, Melton West, Vic 3337

Bedrooms: 3

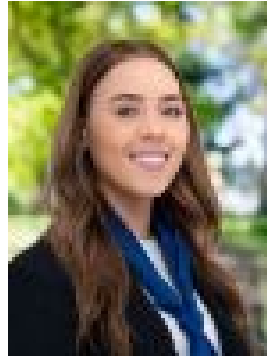
Bathrooms: 2

Area: 673 m2

Type: House



Shane Spiteri
0353101333



Tahlia Hall
0414346108

\$479,000 - \$519,000

Welcome to 10 Chelmsford Way Melton West, a charming home built to last, ideal for first home buyers, investors, and growing families. Step into the charm of this nurtured three bedroom, two bathroom home that displays character and timeless appeal. Nestled in a well-established pocket, this gem has been lovingly looked after, offering a comforting blend of vintage aesthetics and modern conveniences. This delightful home enjoys a convenient location to all levels of schooling, public transport, Woodgrove shopping centre, Melton Waves Leisure Centre, and easy freeway access, providing residents with easy access to a variety of services and recreational activities. Upon entry you are greeted by the generously sized master bedroom featuring ceiling fan, mirrored sliding doors, walk-in robe and a bright ensuite. The remaining two bedrooms both feature built in robes and are serviced by the central bathroom creating a well-functioning floorplan. Adjacent to the master bedroom sits the large lounge area, with plenty of space on offer for the whole family to enjoy, with large windows illuminating the space and a Conara creating inviting retreats for relaxation and comfort. Moving through the home, the dining area holds ample space to utilise as a study nook, or the perfect home office area. The well-equipped kitchen which boasts 900mm cooktop, stainless steel double basin sink and storage space, overlooks this thoughtful design creating a perfect blend of family living and work from home convenience. The allure extends outdoors to a well-kept garden, where mature trees add to the property's timeless appeal. Showcasing an undercover outdoor entertainment area, perfect for hosting gatherings. Situated on a landscaped 673 (approx.) square metre block with side access, and room for future additions. Special features of the property are as follows; ducted heating, evaporative cooling, Conara fireplace, solar panels, garden shed, side gate access, outdoor entertaining, ceiling fan and so much more! This amazing opportunity is not to be missed – call today to book your inspection. (Photo ID is Required at all Open For Inspections) At YPA Melton "Our Service Will Move You" **DISCLAIMER:** Every precaution has been taken to establish the accuracy of the above information but it does not constitute any representation by the vendor/ agent and agency.