

**10 Darrin Close, Bateau Bay, NSW 2261**



**House For Sale**

Thursday, 28 March 2024

10 Darrin Close, Bateau Bay, NSW 2261

**Bedrooms: 5**

**Bathrooms: 2**

**Parkings: 2**

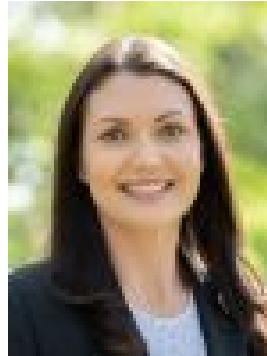
**Area: 667 m2**

**Type: House**



Jay Hinde

0243344333



Sarah Hinde

0243344333

**\$799,000 - \$875,000**

Presenting fantastic value this spacious 5 bedroom home offers multiple living and entertaining spaces with three separate living areas, separate dining, home office and plenty of storage space. Situated on a sunny 667m<sup>2</sup> block with a private level yard adjoining a Council-owned nature reserve providing leafy vistas, this solid home is close to local schools, shops and beaches and is ideal for those looking for plenty of space for the family, those looking to add value, or a great investment opportunity in a high-growth suburb.

**The Property:-** Brand new carpets, new curtains, freshly painted inside- 900mm cooktop and stainless-steel range hood- Built-in-robos to 3 bedrooms, 2-way ensuite / main bathroom, plus second bathroom- Combustion fireplace, floating floors, NBN- Adjoining Council-owned nature reserve with privacy and leafy vistas- New construction either-side, high-growth area- Sizeable level yard with Colorbond fencing, 3 x 3m shed- Off-road parking for multiple cars, 6 x 6m concrete pad- Granny flat potential (STCA)- 33m frontage to Darrin Close, private elevated aspect with level yard- Rental estimate: \$680 /wk

**The Location:-** 160m to public bus stop- 200m to the newly upgraded 'Cottage Playground' children's park- 280m to The Central Coast Montessori Primary School- 1.1km to Bright Starts Preschool Bateau Bay- 1.4km to Brooke Avenue Primary School- 1.5km to Cresthaven Shopping Centre (12 specialty retailers inc. IGA)- 2.4km to Bateau Bay Square (major shopping centre, 93+ retailers)- 2.8km to Mingara club, aquatic center, gym, cafes, restaurants- 3.1km to Bateau Bay Beach, Wyrabalong National Park, coastal walks

Homes of this size are rarely offered at this price point, and this one is sure to be popular. Contact Jay Hinde on 0405 422 825 for more information.

**Disclaimer:** All information contained herein is gathered from sources we consider to be reliable, however we cannot guarantee or give any warranty about the information provided. All images, border/s, property boundaries and floor plans are indicative of the property and for illustrative purposes only. Any development potential stated herein is suggestive only and may be subject to relevant approvals, as such it is not to be relied upon. All distances and measurements are approximate. Interested parties must solely rely on their own enquiries.