

10 Gillam Place, Mount Melville, WA 6330

Sold House

Monday, 4 September 2023

10 Gillam Place, Mount Melville, WA 6330

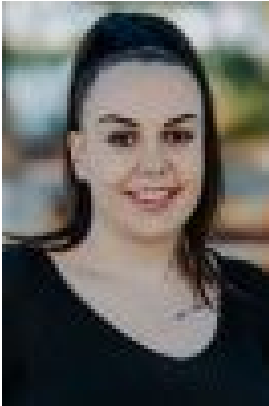
Bedrooms: 3

Bathrooms: 2

Parkings: 2

Area: 620 m2

Type: House



Chloe Glass
0437308533

Contact agent

Situated at the top end of a quiet cul-de-sac street, yet only a short 3km from Albany's CBD, the location and affordability of this home is hard to beat. Perfect for first home buyers or the savvy investor, sure to attract some keen interest. The 620m² lot offers side access to the backyard and down to the single garage workshop shed, with plenty of room to park a boat or caravan. A single carport with direct front door access welcomes you into the roomy open plan living space, which meets the practical dining and kitchen area, all located at the front of the house. The stylish kitchen features ample overhead and under bench cabinet space, gas cooktop and a built in rangehood. Down the hallway you will find the master bedroom with direct access to its own ensuite, and two more spacious bedrooms, all containing great built-in robes. At the end of the hall is the main bathroom, separate toilet and generously sized laundry with sliding door access directly to the enclosed backyard. This is a rare opportunity to secure an affordable & practical starter home in a very desirable area, don't miss your chance! Call Chloe today on 0437 308 533 to book an inspection.