

10 Gippsland Way, Craigieburn, Vic 3064



House For Sale

Thursday, 11 January 2024

10 Gippsland Way, Craigieburn, Vic 3064

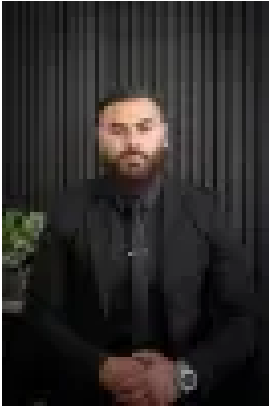
Bedrooms: 3

Bathrooms: 1

Parkings: 2

Area: 400 m2

Type: House



Jack Esho
0422777504



Karaline Sleiman
0487687102

Contact Maple!

A perfect entry-level home nestled within the prestigious Craigieburn perfect for all families. This remarkable single-level residence offers a perfect fusion of style, comfort, and convenience, tailored to accommodate large or growing families. Bedrooms are well-appointed, with the primary bedroom boasting walk-in robe and two additional bedrooms featuring a built-in robe. Additional features include a spacious central bathroom with a large bathtub which is direct access to the master bedroom and separate water closet. The modern kitchen is equipped with a 600mm stove top and oven also a built-in pantry perfect for all your storage needs. Spacious living zone opening up to the alfresco for a second living zone to enjoy during Melbourne summer. The stand-out is the grand workshop built for the perfect creative, handyman or car lover ect- 7.5m x 4m. Additional highlight features include the back yard perfect for entertaining, pets to enjoy and kids or plant all your desired plants. Spacious laundry with outdoor access, 6.6KW solar panels, refrigerated cooling and ducted heating, double garage, front window security shutters plus so much more. This is one home you don't want to overlook. For all enquiries contact Jack on 0422 777 504 or Karaline on 0487 687 102.