

10 Greenview Place, Reedy Creek, Qld 4227



House For Sale

Wednesday, 3 April 2024

10 Greenview Place, Reedy Creek, Qld 4227

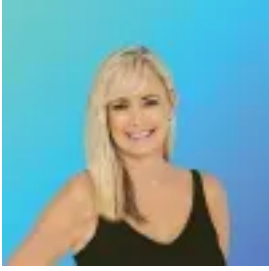
Bedrooms: 5

Bathrooms: 2

Parkings: 2

Area: 600 m2

Type: House



Tracy Tomars

0755930044

OFFERS OVER \$1,795,000

Nestled in one of 'The Observatory's' premier family friendly cul-de-sacs sits this stunning home showcasing native bushland surroundings and within walking distance to prestigious local King's Christian College, Hillcrest Christian College and Gold Coast Christian College. With only 9km to the white sands and world famous surf break of Burleigh beach this lifestyle choice will be the envy of many. Whether its days by the pool or entertaining friends and family, there's a seamless transition from the kitchen, lounge and dining areas out to the alfresco and pool that harmonises perfectly with the grassed lawn area where kids and pets can play safely. The owners attention to detail and desire to create something special has resulted in a home that allows each family member to relax with numerous separate living areas. Definitely add this to any short list of MUST VIEW properties.

Other features:

- **Entry Level** • At the heart of the home, a beautifully appointed kitchen includes effortlessly-long island bench top, 5-burner gas cooktop, dishwasher, walk in pantry with an abundance of cupboard space.
- Spacious tiled open plan living and dining areas integrate easily with the large alfresco entertaining area via bifold doors
- The rumpus room is vast in size and offers numerous options for relaxed living
- Large media room or fifth bedroom
- Home office
- Powder room for guests
- Well-appointed laundry
- Double lock up garage with epoxy flooring
- Sparkling swimming pool plus flat grassed area for children to enjoy

Upper Level:

- Expansive master retreat offers its own private balcony and exudes elegance with a luxurious ensuite featuring bath, double vanity and shower plus a separate toilet as well as fully fitted walk in robe.
- Three additional bedrooms are also queen-sized and appointed with built in robes and ceiling fans
- Stylish main bathroom features bath, rain shower, vanity and separate toilet
- Additional carpeted lounge area or kids retreat

Additional highlights:

- Ducted air conditioning
- Ceiling fans
- Steel frame construction
- An abundance of storage throughout the home
- Solar panel
- Gas hot water

Location: The Observatory at Reedy Creek is a highly regarded family-friendly haven and offers easy access to parklands, walking trails and prestigious local schools along with several popular childcare choices. 5 min to M1 motorway and 20 min to Gold Coast Airport. Reedy Creek Village is close by with larger-scale retail and leisure amenities at Robina Town Centre only 10min away.

Disclaimer: We have in preparing this information used our best endeavours to ensure that the information contained herein is true and accurate, but accept no responsibility and disclaim all liability in respect of any errors, omissions, inaccuracies or misstatements that may occur. Prospective purchasers should make their own enquiries to verify the information contained herein. * denotes approximate measurements.