

10 Gresall Street, Clyde North, Vic 3978



House For Sale

Saturday, 11 May 2024

10 Gresall Street, Clyde North, Vic 3978

Bedrooms: 4

Bathrooms: 2

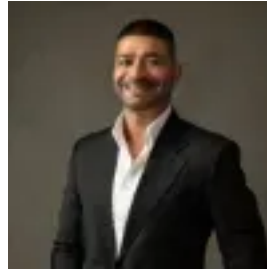
Parkings: 2

Area: 437 m2

Type: House



Gary Singh
0359913888



Sanjay Singh
0359913888

\$850,000 - \$900,000

Clyde North: St. Germain Estate With four bedrooms, this large property is perfect for a growing family. Additionally, there are two functional and convenient bathrooms. With its multiple living areas, the house provides space for a variety of activities as well as relaxation. The lovely rectified porcelain tiles that cover the entry, kitchen, dining area, and family room are the first thing you'll notice when you walk into the house. The property feels more open and spacious thanks to the high ceilings. An ensuite bathroom and walk-in closet are features of the master bedroom layout. The ensuite is a posh and private area with wall-to-wall tiles, dual vanities, and a stone benchtop. The built-in robes in the remaining bedrooms provide lots of storage space. The family's needs are met by the main bathroom, which is centralized and includes a bathtub, separate toilet, and stone counter top. One of the property's highlights is the spacious open-plan kitchen. It features stone waterfall benchtops, which offer a useful and long-lasting surface in addition to elegance. A walk-in pantry and high-quality appliances enable effective organization and storage in the kitchen. The family area opens up to an outdoor area with a view of the low-maintenance garden. This outdoor space offers a chance to enjoy alfresco dining, hosting guests, or just taking in the clean, green surroundings. All in all, this house has a lot of living space, which makes it ideal for a growing family. Its attractiveness is enhanced by the well-thought-out design, high-quality finishes, and practical features that provide a cozy and pleasurable living space. The main features of the property- Land Size approx. 437 sqm- 4 bedrooms- 2 bathrooms- Master with WIR- Ensuite with stone benchtops and dual vanities- Main bathroom with stone benchtop- Kitchen with waterfall stone benchtop- 900mm stainless steel appliances- Walk in Pantry- Formal living room- Meals area- Family area- Alfresco- Low maintenance gardens- Side Access-Ducted Heating: Yes-Split System Cooling: Yes-Dishwasher: Yes- Chattels: All Fittings and Fixtures as Inspected as Permanent Nature- Deposit Terms: 10% of Purchase Price- Preferred Settlement: 30/45/60 Days Located in close proximity to all amenities,- Primary & Secondary schools- Clyde Grammar School- Bunnings and Commercial/Retail Precinct- Eden Rise Shopping Centre-Medical centres- Sporting facilities- Ramleigh Reserve Cricket & Soccer Fields- Childcare- Gym- Casey RACE Recreation & Aquatic Centre- Casey Indoor Sports Centre- Cafes & Restaurants- Parks & Playgrounds- Monash FWY For more Real Estate in Clyde North contact Gary Singh/Sanjay Singh PHOTO ID REQUIRED AT OPEN HOMES. Note: Every care has been taken to verify the accuracy of the details in this advertisement, however, we cannot guarantee its correctness. Prospective purchasers are requested to take such action as is necessary, to satisfy themselves with any pertinent matters.