

# 10 Hibiscus Close, Alfords Point, NSW 2234

## House For Sale

Wednesday, 31 January 2024



10 Hibiscus Close, Alfords Point, NSW 2234

**Bedrooms: 4**

**Bathrooms: 2**

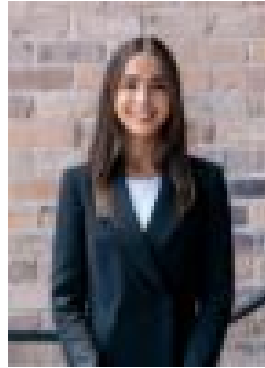
**Parkings: 1**

**Area: 698 m2**

**Type: House**



Jo Siljanoski  
0418452229



Stephanie Blanchard  
0405116046

## Auction

Discover this impeccably maintained and renovated single-story family residence, showcasing exquisite presentation. Ideal for both growing families and downsizers, the property boasts four spacious bedrooms, multiple living spaces, and a well-kept private yard. Viewing is essential to fully appreciate its charm.- Single level, all on one level for easy care living - Sundrenched North facing frontage- Positioned in a family-friendly cul-de-sac setting surrounded by other quality homes- Four generously sized bedrooms, Master bedroom with en suite bathroom - Formal lounge with built-in bar, Separate formal dining room- Modern kitchen with Miele appliances and Caesarstone benchtops- Spacious master bathroom with separate toilet- All-year-round covered outdoor entertaining patio plus level lawn and garden shed- Modern internal laundry with external access- Single garage with remote plus storage- 2 x Security alarm systems, 21 Kilowatts Solar Panels, 6 x Security Cameras - Ducted vacuum system, Combustion fireplace, Split system air conditioning - Located within the Menai High, Alfords Point Public School & Illawong School catchment area- Only strolling distance to the local shops and restaurants while also enjoying outstanding proximity to excellent schools and transportation. When looking at properties it's important to have confidence in how much you can borrow. As Ray White are partnered with Loan Market they can make this simple and easy for you. Should you wish to know your borrowing powers simply go to [www.loanmarket.com.au/brokers/jason-wylie](http://www.loanmarket.com.au/brokers/jason-wylie) now and our Loan Market broker will be in touch.