

10 Iberia Street, Wollert, Vic 3750



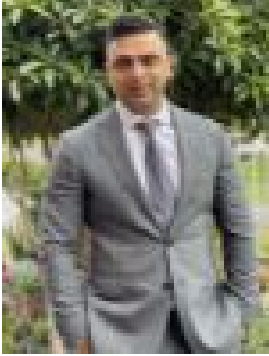
Residential Land For Sale

Tuesday, 12 March 2024

10 Iberia Street, Wollert, Vic 3750

Area: 430 m2

Type: Residential Land



Gurbir Singh
0456156210

\$420,000 - \$450,000

Unlock the potential of this fully-titled 430-square-meter land, an ideal canvas to realize your dream home in the coveted Wollert neighborhood. Boasting uniform dimensions (15.5m x 28m) and a north-facing alignment as a corner block, this allotment provides a seamless opportunity for your envisioned residence. Wollert's allure lies in its lifestyle, offering a thriving community seamlessly integrated with nature, surrounded by expansive conservation reserves and parklands. The location ensures convenient access to a variety of schools, including Wollert Secondary College, along with proximity to popular shopping centers, Mernda Station, and the Hume Freeway. Your dream home finds the perfect foundation in this strategically located block, making it an unparalleled opportunity for a residence that aligns seamlessly with your vision. This is the one!!