

10 Manning Drive, Orford, Tas 7190

RIPPLE

Sold House

Tuesday, 3 October 2023

10 Manning Drive, Orford, Tas 7190

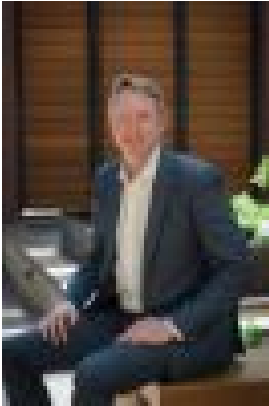
Bedrooms: 2

Bathrooms: 1

Parkings: 4

Area: 2054 m2

Type: House



Warwick Page
0362280895

Contact agent

If you're dreaming of a weekend escape from the bustle of city living that's still easily accessible from home, look no further than this charming two-bedroom retreat in the quiet seaside township of Orford. Built in 1973 and offered for sale for the first time in 40 years, here is a rare opportunity - whether you fall in love with this quaint cottage and its relaxed retro ambience or have bigger plans for development - this exceptional property has so much potential. Inside, you'll find a generous living space with large windows that fill the whole area with natural light, and a cosy wood fire to warm your winter nights. There is room for dining, and a compact yet functional kitchen that includes plenty of storage. Both good-sized bedrooms feature generous built-in wardrobes; and the bathroom, separate toilet, and laundry facilities complete the simple floor plan, providing all you could need for everyday comfort. The covered deck at the rear of the property is a wonderful spot to dine outdoors in warmer weather or unwind amongst the peace and privacy that the surrounding bushland provides, and the generous 2054sqm parcel of residential land allows ample off-street parking for cars, boats or caravans. All this additional space, with the existing dwelling positioned towards the front of the block and easy access at either side, presents an ideal prospect for development (STCA), thanks to its prime residential zoning. Situated just one hour from Hobart, 35 minutes from the rural hub of Sorell, and en route from Hobart airport, this is an easy getaway from almost anywhere. You will be only five minutes from Orford's great amenities, with all the recreational activities the area has to offer - swimming, fishing, paddling, walking tracks and easy access to the boat ramp at East Shelley Beach. Don't miss this incredible opportunity to own a piece of paradise - settle into a cosy and relaxed weekender (the owner is even willing to include all the furniture), spruce up and extend, or consider the opportunities for further development here. Whatever you choose, Orford is the perfect location to embrace a tranquil seaside lifestyle. Contact Warwick today to find out more and arrange a viewing time. We have obtained all information in this document from sources we believe to be reliable; however, we cannot guarantee its accuracy. Prospective purchasers are advised to carry out their own investigations..