

# 10 Mount Street, Bellevue, WA 6056

## Sold Duplex/Semi-detached

Tuesday, 5 September 2023



10 Mount Street, Bellevue, WA 6056

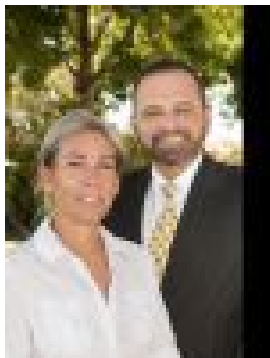
Bedrooms: 2

Bathrooms: 1

Parkings: 1

Area: 450 m2

Type:  
Duplex/Semi-detached



Team Notte

**\$280,000**

OPEN BY APPOINTMENT Absolute bargain!! Situated in a quiet "no thru road" is this lovely 2 bed ,1 bath on approx 450sqm of land and is currently tenanted at \$340.00 per week with a great tenant for over 10 years! Would make the perfect investment!! The lease is due at the end of August so vacant possession could be available.Features include:2 Bedrooms1 Bathroom Open plan Meals, Family and KitchenCeiling fans AirconditioningHuge rumpus room at the rear, fully enclosedGarage with rear accessHuge rear block, room for a shed, boat, caravan Plenty of room to park cars at the front This home would suit an Investor, FIFO, First Home Buyer or even downsizing Buyers - the opportunities are endless. Please call TEAM NOTTE on 0418 908 133 to make your appointment to view.