

10 Murray Court, Wattle Grove, NSW 2173

House For Sale

Thursday, 30 May 2024

10 Murray Court, Wattle Grove, NSW 2173

Bedrooms: 3

Bathrooms: 1

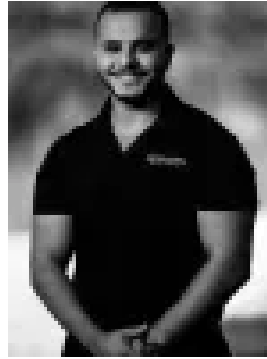
Parkings: 2

Area: 577 m2

Type: House



Michael Demian
0404601084



Mark Demian
0404601084

Private Negotiation

Situated on a generous 577 sqm corner block in a quiet street, this exquisite property seamlessly blends luxury, comfort, and practicality. Meticulously renovated and thoughtfully designed, it's perfect for families and entertainers alike. Located near Orara Park, it offers easy access for outdoor activities in a friendly and peaceful part of Wattle Grove. From the moment you arrive, you'll be captivated by its street appeal, featuring a well-set-back position, a front tiled pergola for relaxation, and a double garage with drive-through access to the rear. Its corner position provides plenty of off-street parking and is perfect for additional vehicle accommodation. Inside, you'll be impressed by the seamless front to rear flow and its sheer size. Luxurious tiles guide you through the entire home, ensuring absolute low maintenance. The elegant front living room, adorned with plantation shutters and downlights, is versatile and welcoming. Continue through, and you'll find three spacious bedrooms, each providing a comfortable retreat. The master bedroom features two triple-sized built-in wardrobes for ample storage. A luxurious, renovated three-way bathroom features floor-to-ceiling tiles, a spacious bath and shower, a floating vanity, and a separate toilet. Additionally, there is a renovated laundry with an extra toilet and external access, offering added convenience. Family time and gatherings have never been more perfect than in the expansive open-plan living and dining area, which transitions effortlessly into the outdoor space. The adjacent luxury kitchen is a chef's dream, featuring stainless steel appliances, a fitted microwave, gas cooking, a glass splashback, and extended benchtops that double as a breakfast bar. Outside, the expansive area includes a large undercover space for year-round entertaining. The wrap-around grass area, with dual side access, is perfect for kids and pets to play, with ample room to install a pool without sacrificing yard space. For sustainable living, the property is equipped with solar panels, ensuring energy efficiency and lower utility bills. Additional amenities include attic storage, offering extra space for all your needs, and a split system A/C in the living area, ensuring added comfort for all seasons. This home perfectly combines modern luxury with functional living, offering an exceptional lifestyle in a prime location.