

10 Orleton Place, Werrington County, NSW 2747

BESPOKE. REALTY.

House For Sale

Friday, 26 April 2024

10 Orleton Place, Werrington County, NSW 2747

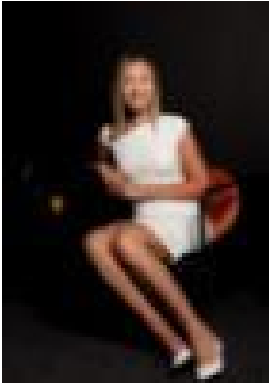
Bedrooms: 3

Bathrooms: 2

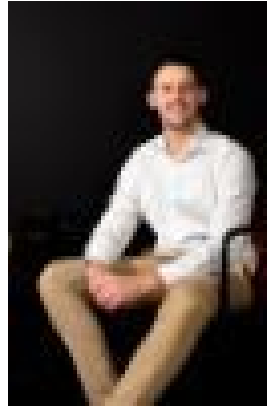
Parkings: 1

Area: 777 m2

Type: House



Briannan Nand
0490160662



Bradley George
0247379977

Property Launch

Nestled in a quiet street on an impressive 777m² block, this is a fantastic opportunity to secure a great three bedroom brick home in a sought after location. Conveniently located close by Werrington County Public School, Werrington County shops, Public Transport and more! Features: - Three bedrooms, all with built-in robes and ceiling fans - Well appointed lounge room upon entrance - Polished timber flooring throughout - Updated bathroom with shower, toilet and bathtub - Neat and tidy kitchen with ample bench and cupboard space + gas cooking overseeing the combined dining area - Internal laundry - Teenage retreat with bathroom, kitchen and large living space - Gas hot water system and split system air conditioning - 2.4kw solar system - Fully fenced yard with two sheds - Large driveway with carport for off street parking