

10 Pennine Way, Wellard, WA 6170

House For Rent

Saturday, 13 April 2024



10 Pennine Way, Wellard, WA 6170

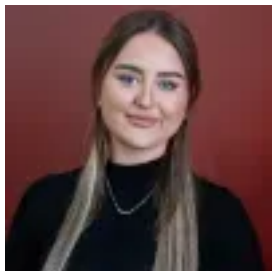
Bedrooms: 4

Bathrooms: 2

Parkings: 4

Area: 536 m2

Type: House



Gemma Eldrid

0894394405

\$720 per week

We welcome to the rental market this lovely and spacious family home with an entertainers paradise in the rear. Neutral decor throughout and very welcoming, featuring low maintenance lawns/gardens with a lovely decked area and a 6-8 seater Spa. Property Features Include: * 4 Bedrooms, carpeted. * 2 Bathrooms - Ensuite double vanity and shower * Separate Lounge and study * Open plan family, dining kitchen area * Plenty of storage * Activity area between rear bedrooms * Double garage with rear access * Low maintenance lawns/gardens * Evaporative Air Conditioning * Gabled patio area * Rear Shed Porcelain tiled living areas with carpets in the bedrooms, lounge and study and roller blinds throughout. Avail Mid April 24 and this is a definite must see home in a quiet location with approximately 15min walk to local train/shopping precinct. Please phone 9439 4405 to arrange a viewing or email gemma@encoreproperty.com.au Pet Negotiable, applications submitted online will be processed one you attend a viewing.