

10 Rangeview Road, Lower Plenty, Vic 3093



House For Sale

Saturday, 9 March 2024

10 Rangeview Road, Lower Plenty, Vic 3093

Bedrooms: 4

Bathrooms: 3

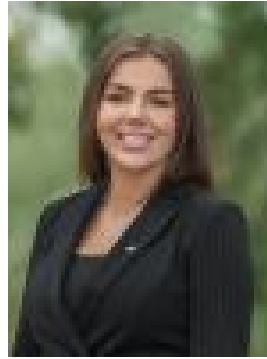
Parkings: 2

Area: 1080 m2

Type: House



Aaron Yeats
0400067024



Ashleigh Garch
0402660934

\$1,400,000 - \$1,500,000

EXPRESSIONS OF INTEREST CLOSING TUESDAY 9TH APRIL AT 4PM (UNLESS SOLD PRIOR)A seamless fusion of mid-century style with luxury upgrades, this timelessly elegant home transcends eras and provides an outstanding family lifestyle. Thoughtfully designed to maximise the lush treed canopy and distant mountains views, a home office is tucked away at the front, leading to a huge living room with a gas log fire and seamless access to the balcony - ideal for cocktails and nibbles when entertaining, or casual dining. Awaken your inner chef in the gourmet kitchen, equipped with premium appliances, eye-catching subway tiles, twin Franke sinks, a stone breakfast bar and clever storage space, overlooking a sunny dining zone with balcony access, and large windows that draw in natural light and perfectly frame the view. The generously proportioned master bedroom boasts peaceful views, a walk-in robe and a modern ensuite, complemented by a second bedroom and a stylish bathroom featuring a walk-in rain shower and storage cabinet for towels or toiletries. Head downstairs to find a large rumpus room and access to the alfresco zones, two additional robed bedrooms and a sparkling bathroom with instant hot water. Outdoors, the backyard delivers an instant sense of calm and connection to the environment, highlighted by a water feature, red brick paved alfresco zones and a beautiful established garden. Finished with polished timber floors, ceiling fans, evaporative cooling, a large laundry, under house storage/wine cellar, garden shed, a carport and a lock-up garage. In a quiet neighbourhood, the home is zoned for Montmorency South Primary School and Eltham High, and a short drive from Lower Plenty Village and Hotel, Eltham and Greensborough Shopping Centres, Heidelberg Golf Club, various parks and walking trails.