

# 10 Silky Road, Spring Farm, NSW 2570



## Sold House

Monday, 6 November 2023

10 Silky Road, Spring Farm, NSW 2570

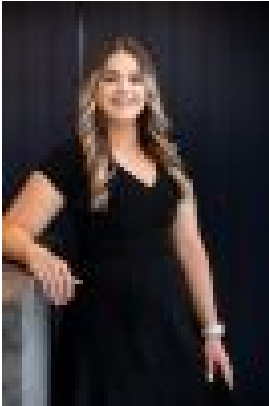
Bedrooms: 4

Bathrooms: 2

Parkings: 2

Area: 533 m2

Type: House



Rhiannon Nasko  
0451829818



Steve Harrison  
0423026499

**\$1,170,000**

Set on a generous 533sqm corner block and located only metres from the picturesque Riverside Recreational Park and lake is this fantastic family home. Boasting a long list of features you will be impressed by the size and space of the home and the amazing outdoor areas. Featuring four spacious bedrooms with built-in robes to three. The master bedroom has his and hers walk-in wardrobes and an ensuite with floor-to-ceiling tiles. The two bedrooms to the rear of the home are oversized and are tucked away from the living areas. A separate TV or theatre room (currently being used as a gym) can be closed off from the main family/dining room and the kitchen is the heart of the home overlooking everything. The kitchen itself is a masterchef's delight with 900mm quality stainless steel appliances, stone benchtops, pendant lights and ample cupboard space. The family room features custom built wall hung cabinets and is positioned to look out onto the extensive backyard. The main feature of this property is the outstanding outdoor entertaining area, laid with travertine tiles that lead you to the fully landscaped, tropical pool. The yard has ample room and is perfect for the kids and pets to explore. With all the landscaping done and nothing to spend you will have to be quick with this perfectly located and beautifully appointed home. Other features include: - 900mm Stainless steel appliances - 10kw Solar Panels - Ducted air conditioning - Heated in-ground pool - Alarm system - Side access big enough for a trailer or small boat - 400m to Spring Farm Public School - 100m to Riverside Park - 2km to Spring Farm Shopping Centre - 1.4km to Bypass on/off ramp