

10 Tanners Way, Kellyville, NSW 2155

Sold House

Friday, 18 August 2023

10 Tanners Way, Kellyville, NSW 2155

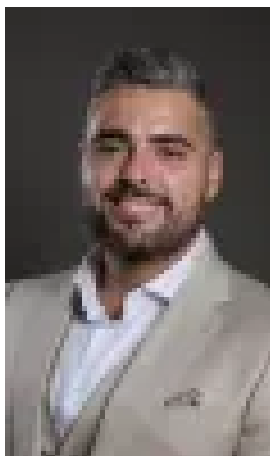
Bedrooms: 4

Bathrooms: 2

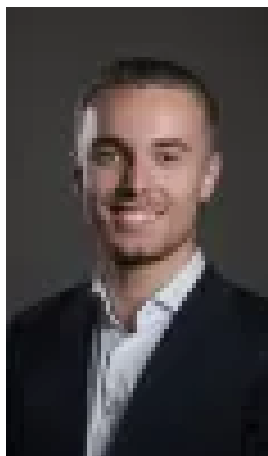
Parkings: 3

Area: 570 m2

Type: House



Corie Sciberras
0288819907



Mitchell OConnor
0288819907

Contact agent

Proudly presented to the market is this prestigious family home, immaculately maintained and presented with style and sophistication throughout. This north-facing home is sure to impress, offering many desirable features including open plan living, timber flooring, capacious bedrooms, immaculate bathrooms and a private outdoor entertaining space. Located within close proximity to endless options for transport, high quality schools, reserves and shops, this home is perfectly positioned a short stroll from Bernie Mullane reserve and minutes walking to the new oval at Samantha Riley Drive. and is ready for you to move in and enjoy. Featuring:

- Contemporary kitchen with an abundance of natural light, gas cooking, stainless steel appliances, ample cupboard and bench space and counter top seating.
- Inviting and cosy living room with an exquisite gas fireplace, ample space and with custom made bookshelves - an ideal room for spending time together.
- Spacious, open plan living and dining space with ceiling fan and stunning timber flooring.
- Head outside to the impressive alfresco area with a built in BBQ to the patio overlooking the sun-drenched, large, flat backyard with built in custom made bench and tall hedges for privacy - this private space will truly blow your guests away.
- Immaculate master bedroom upon entry with walk in robe, roller shutters and convenient ensuite bathroom with shower, vanity and toilet.
- Three additional bedrooms, all appointed with built in wardrobes, roller shutters and ceiling fans - all central to the main bathroom with luxury corner bath, shower, vanity and toilet.
- Central laundry with ample storage and external access for convenience.
- An abundance of storage can be found with the attic storage with fold up ladder, in the double automated garage with one drive through door to external patio.
- The residence is complete with linen storage, solar panels, ducted air conditioning, downlights throughout, roller shutters to all bedrooms, plantation shutters throughout, recycled water, and a triple automated garage.

Location Benefits (all approximations):

- 300m walk to the nearest bus stop
- 2min drive to William Clarke College
- 550m/3min walk to Bernie Mullane Sports Complex
- 4min drive to Kellyville High School
- 4min drive to Kellyville Village
- 5min drive to Kellyville Public School
- 5min drive to Kellyville Preschool
- 6min drive to Kellyville Metro Station
- 10min drive to Rouse Hill Town Centre
- 10min drive to Rouse Hill Metro

Contact Corie Sciberras on 0407 033 203 for more information. *All information in this advertisement was gathered from sources deemed reliable, however Sciberras Group RE or any staff related to the advertised property cannot guarantee the accuracy of this information and nor do we accept responsibility for its accuracy. For further clarification, please make your own enquiries!