

# 10 The Crescent, Russell Lea, NSW 2046

**BresicWhitney**

## Sold House

Friday, 2 February 2024

10 The Crescent, Russell Lea, NSW 2046

**Bedrooms: 5**

**Bathrooms: 3**

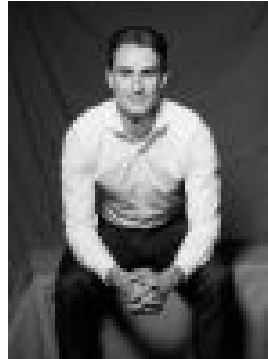
**Parkings: 4**

**Area: 613 m2**

**Type: House**



Adrienne Williams  
0416301650



Jack Parry  
0417461804

**\$4,100,000**

A contemporary residence with a selection of separate spaces to suit family life, this home is a versatile retreat with private entertaining areas and alfresco poolside settings. Opening to a timber deck and lawns, the opposite aspect is designed to a swimming pool and courtyard within a hedged garden setting. In a prime cul-de-sac location, it's set on 613sqm just moments to parklands and the famous Bay Run, with glimpses of the water and city upstairs. Free Building & Pest Report at [bw.com.au](http://bw.com.au) Highlights\* Modern lines & contemporary interiors\* Sep. family/living/media/sitting spaces\* Quality appointments, spotted gum floors\* Garage plus additional driveway parking\* Stone kitchen, gas cooking, dishwasher\* Oversized sliders & concertina doors\* Covered alfresco setting w/ timber deck\* Swimming pool in private hedged setting\* Direct internal garage access, ducted a/c\* Stroll to parklands, water & The Bay Run