

**10 Wetherby Road, Wyndham Vale, Vic 3024**



**House For Sale**

Saturday, 11 May 2024

10 Wetherby Road, Wyndham Vale, Vic 3024

**Bedrooms: 4**

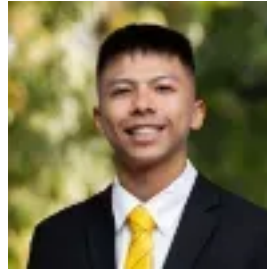
**Bathrooms: 2**

**Parkings: 2**

**Type: House**



Alex Krnjeta  
0399740000



Danny Tran Le  
0432677625

**\$580,000 - \$620,000**

Welcome to your dream home nestled in the prestigious Jubilee Estate at 10 Wetherby Road, Wyndham Vale. This brand-new residence offers the epitome of modern living, combining style, comfort, and convenience in every detail. As you approach the property, you're greeted by a contemporary facade, showcasing sleek lines and architectural finesse. Step inside, and you're immediately struck by the spaciousness and elegance of the interior. Boasting four generously sized bedrooms, this home provides ample space for the whole family to thrive. The master suite is a luxurious retreat, featuring a private ensuite bathroom and a spacious walk-in wardrobe, offering a serene sanctuary to unwind after a long day. The remaining three bedrooms are thoughtfully designed with built-in robes, ensuring both functionality and comfort for every member of the household. The second bathroom is tastefully appointed with modern fixtures and finishes, providing convenience and style. Entertaining guests is a breeze with the open-plan living area, seamlessly integrating the kitchen, dining, and family zones. The gourmet kitchen is a chef's delight, equipped with premium appliances, ample storage space, and a sleek island bench, perfect for casual meals or hosting gatherings. Throughout the home, you'll find a split system cooling system and ducted heating, ensuring year-round comfort in any weather condition. Whether it's cozy winters or scorching summers, you'll always feel at ease within these walls. Outside, the low-maintenance backyard offers the ideal space for outdoor relaxation and alfresco dining. Whether you're enjoying a barbecue with family or simply soaking up the sunshine, this outdoor area provides a tranquil retreat from the hustle and bustle of everyday life. Located in the highly sought-after Jubilee Estate, residents enjoy access to a range of exclusive amenities, including parks, playgrounds, walking trails, and sporting facilities. With nearby schools, shopping centers, and public transport options, everything you need is right at your doorstep. Experience the pinnacle of modern living at 10 Wetherby Road, Wyndham Vale—a place where luxury meets lifestyle, and every day feels like a retreat. Welcome home!