

10 Witley Close, St Marys, NSW 2760



House For Sale

Thursday, 14 December 2023

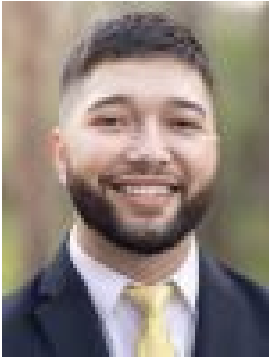
10 Witley Close, St Marys, NSW 2760

Bedrooms: 5

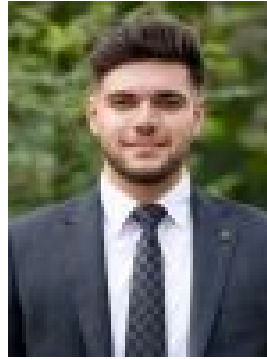
Bathrooms: 2

Area: 656 m2

Type: House



Tahiwī Mcgee
0296234033



Eli Alkassar
0296234033

\$1,043,000

We are pleased to present 10 & 10a Witley close, St Marys SECURED OFF MARKET from a buyer within our database. Positioned on 656sqm of land, this well-maintained home situated in prime location of St Marys and only minutes away from the booming St Marys precinct which includes St Marys railway station & bus interchange, Village Centre Shopping Plaza, Station Street Plaza, local shopping strip, restaurants, café's, schools and other essential amenities. Want a sneak peek on future off market properties? don't hesitate to call Tahiwi Mcgee on 0423 388 252