

1001/161 New South Head Road, Edgecliff, NSW 2027



Sold Apartment

Friday, 26 January 2024

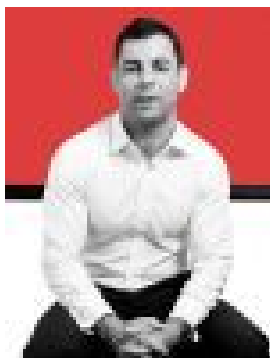
1001/161 New South Head Road, Edgecliff, NSW 2027

Bedrooms: 1

Bathrooms: 1

Parkings: 1

Type: Apartment



Paul Amentas
0299087887

Contact agent

The lifestyle appeal within footsteps to Edgecliff Centre and Rushcutters Bay Park gives this smartly presented apartment excellent value. It offers a quality home or investment opportunity in a great location with easy CBD access. Ultra-convenient location, this 1 bedroom is situated in the contemporary boutique building 'Diseno', which was designed by Allen, Jack + Cottier. This apartment offers the ultimate in low maintenance living with the clever use of space. LEASED TO 13.07.24 @ \$550 PER WEEK. Double bedroom with built-ins. Stylish ensuite bathroom includes an internal laundry. Open plan living/dining. Modern gas-cooking kitchen featuring stone finishes and dishwasher. Secure carspace. Visitor parking within building. Secure and convenient address. Lift, video intercom. Potential strong yield investment. Stroll to Edgecliff Centre & Station & all its amenities, Moments' walk to Rushcutters Bay Park, 5-8 min train to CBD, minutes to Bondi Junction and Double Bay shopping and restaurant precinct.