

**1002/2 Kingfisher St, Lidcombe, NSW 2141**

**Apartment For Sale**

Wednesday, 12 June 2024



1002/2 Kingfisher St, Lidcombe, NSW 2141

**Bedrooms: 2**

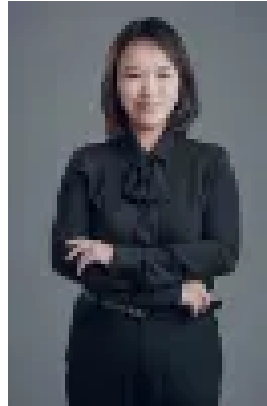
**Bathrooms: 2**

**Parkings: 1**

**Type: Apartment**



Angela Romano  
0418126726



Robyn (Lingyun) Bao  
0449078721

## Just Listed | Contact Agent

Facing north and west corner, this generously proportioned 2-bedroom apartment boasts a water view, leafy outlook, and quality finishes. Situated in the vibrant Sydney Olympic Park precinct, it offers a convenient lifestyle within walking distance to the Olympic Park Train Station and future Metro. • Sunlight North facing with peaceful leafy and water views • Spacious bedrooms with built in wardrobes with connecting ensuite in both main and second bedroom • European kitchen with stone benchtop, SMEG stainless steel appliances including gas cooking, oven, microwave, integrated dishwasher & stone benchtop • Open Entertainers lounge + combined dining with north facing balcony indulge in radiant lighting and natural garden views • Internal laundry w Fisher & Paykel dryer included • 1 Car space together with a storage cage • Common outdoor facilities | including BBQ, entertaining area, and a generous landscaped central garden Location: • 650m to Olympic Park train station & future Sydney Metro West station • The proposed Stage 2 Parramatta Light Rail stop is on your doorstep • 2 min drive to the M4 Motorway • 1.4km Lidcombe Shopping Centre • 15km to Sydney CBD