

**1005 Barrenjoey Road, Palm Beach, NSW 2108**



**House For Sale**

Wednesday, 24 January 2024

1005 Barrenjoey Road, Palm Beach, NSW 2108

**Bedrooms: 5**

**Bathrooms: 2**

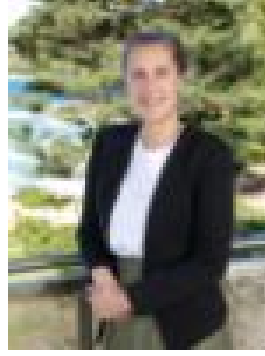
**Parkings: 2**

**Area: 1005 m2**

**Type: House**



Noel Nicholson  
0411884290



Tara Jaijee  
0299742300

## EOI | Closing 26th Feb

Perched elegantly along the serene shores of Pittwater on exclusive Sandy Beach, this exceptional Palm Beach waterfront property is a jewel on the prestigious level part of Barrenjoey Road. Occupying a substantial plot in one of the area's most private and sought-after locales, this beachside gem is a sanctuary of peace and prestige. Tightly held for over 50 years, the property is graced by a delightful weatherboard beach house, thoughtfully designed to host large families comfortably or as a holiday weekender. Its five spacious bedrooms and two well-appointed bathrooms promise comfort and privacy for all, while the interiors exude a bright, coastal charm, accentuated by crisp white hues and abundant natural light. Central to this enchanting residence is the expansive open-plan kitchen, living room, and dining area, masterfully crafted to enjoy family gatherings and effortless entertainment. This inviting space flows effortlessly onto a sun-drenched timber deck, leading to a level, lush lawn that stretches gracefully to the water's edge. Presenting as a classic beach house, the property also offers immense potential for those looking to create their own architectural masterpiece (STCA). This rare find, situated in a highly coveted peninsula pocket, presents a unique blend of immediate enjoyment and future possibilities, making it an unmissable opportunity for discerning buyers seeking the epitome of Palm Beach luxury living.

- + Premium 1005-sqm waterfront parcel in a prestigious Barrenjoey Road locale
- + Charming weatherboard residence perfect for large families or as a holiday home
- + Includes five spacious bedrooms and two well-appointed bathrooms
- + Cool coastal interiors with crisp white hues and plentiful natural light
- + Expansive open-plan living space with seamless flow to outdoor timber deck
- + Lush-level lawn with dazzling sunset vistas over the Pittwater
- + The boatshed provides plentiful storage
- + Ample site with potential for a bespoke beachside retreat (STCA)
- + Moments from Palm Beach, Golf Club, and Barrenjoey Lighthouse