

1009/110-114 James Ruse Drive, Rosehill, NSW 2142



Apartment For Sale

Friday, 19 April 2024

1009/110-114 James Ruse Drive, Rosehill, NSW 2142

Bedrooms: 1

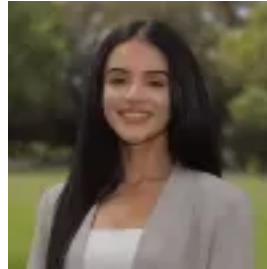
Bathrooms: 1

Parkings: 1

Type: Apartment



Steven Fan
0298913333



Nilufar ToraySafi
0478813567

Auction | On-Site, Saturday 11th May at 10am

Located high on level 10 (one below the executive level) of the 'Nesuto Apartments' building, this one-bedroom (not studio) security apartment is positioned on the sun-drenched North & Westerly corner, with extensive local district views to Parramatta City skyline. Perfect opportunity for first-home buyers, investors, or downsizers who seek low-maintenance living within a holiday-style resort and convenient location. Situated opposite Rosehill Gardens Racecourse and Sydney Metro (under construction), just a short stroll to schools, childcare, local Woolworths supermarket and Harris Park railway station, with rapid access to James Ruse Drive and newly expanded M4 WestConnex, nearby Parramatta Light Rail and one of the largest urban renewal projects in Australia - Parramatta Square, a World-Class Civic Centre. It features: - Spacious approx 52m² of living space plus 18m² of security parking- Combined lounge & dining area with ducted air conditioning- Kitchenette with stone benchtop, ceramic cooktop & dishwasher- Modern bathroom with laundry facilities- Undercover West-facing balcony overlooking Parramatta CBD- Luxurious hotel facilities including lift access, reception, coffee bar, restaurant, gym, swimming pool & spa"Ray White Parramatta Group - Parramatta | Oatlands | Northmead | Greystanes, its directors, employees and related entities believe that the information contained herein is gathered from sources we deem to be reliable. However, no representation or warranties of any nature whatsoever are given, intended or implied. Any interested parties should rely on their own inquiries."