

101/22 George Street, Leichhardt, NSW 2040



Apartment For Rent

Wednesday, 24 April 2024

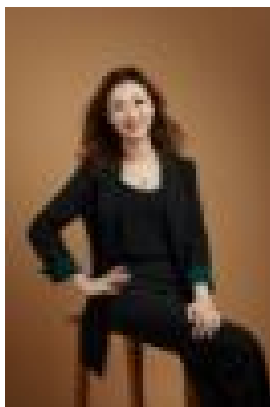
101/22 George Street, Leichhardt, NSW 2040

Bedrooms: 2

Bathrooms: 2

Parkings: 1

Type: Apartment



Diane DAI

\$930 per week

Make yourself at home at Leichhardt Green, just a short stroll to Norton Street, MarketPlace and Leichhardt's famed 'Little Italy' lifestyle. Location: 300m to MarketPlace Leichhardt (Woolworths) Bus Stops at your doorstep 5 Min 400m Walk to Taverner Hill Light Rail Station 10 Min 750m Walk to Lewisham Train Station Features: Low-Rise and Designer Architecture by Bates Smart Construction by Award Winning Builder Richard Crookes) High Quality Timber Floors Gourmet Kitchen, Stone Benchtops and Splashbacks Significant Green Space (50% Landscaped)