

# 101 Bolwarra Drive, Marsden Park, NSW 2765



## House For Sale

Thursday, 23 November 2023

101 Bolwarra Drive, Marsden Park, NSW 2765

Bedrooms: 3

Bathrooms: 2

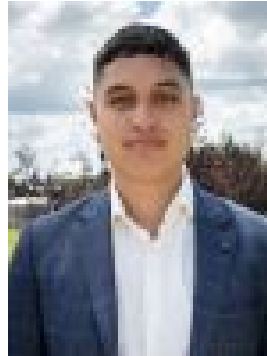
Parkings: 2

Area: 330 m2

Type: House



Theesan Pather



Pera TutuaNathan  
0487870228

## For Sale | Contact Agent

Pera & Theesan on behalf of Urban Real Estate Elara are proud to present this stunning townhouse to the market. As you enter the home you step into the first lounge room which flows seamlessly into the open-plan kitchen living and dining room. The kitchen comprises of 600mm gas appliances, a dishwasher and stone bench-tops. The indoor-outdoor flow of the lower level is fantastic for entertaining. The standout feature of this home is the massive yard being one of the largest backyards for a townhouse with water services to the rear of the lot. The upper level of the home comprises two well-appointed bedrooms and two full bathrooms. A stone's throw from Northbourne Public School, this home is conveniently located for young families. We look forward to meeting with you! For more information or to book a private inspection, please feel free to call Pera Tutua-Nathan at any time on 0487 870 228 or Theesan Pather on 0422 580 577. Features:- 2.6m Ceilings- Tiles to lower level- Downlights throughout- 20mm ceaser stone bench tops- 600mm gas appliances- 300m to Northbourne Public School- Full ducted AC

**Disclaimer:**All information contained herein is gathered from sources we deem to be reliable. However, we cannot guarantee its accuracy, and interested persons should rely on their own enquiries. Images & Furnishing are for illustrative purposes only and do not represent the final product or finishes. For inclusions refer to the inclusions in the contract of sale. Areas are approximate. All parties are advised to seek full independent legal and professional advice and investigations prior to any action or decision.