

101 Commercial Road, Mount Evelyn, Vic 3796



Sold House

Tuesday, 5 December 2023

101 Commercial Road, Mount Evelyn, Vic 3796

Bedrooms: 4

Bathrooms: 1

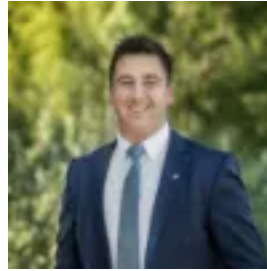
Parkings: 2

Area: 1517 m2

Type: House



Ash Thompson
0398706211



Alan Hodges
0398706211

\$857,000

Positioned on an expansive 1517sqm block amidst gently rolling lawns, this beautifully renovated home boasts stunning panoramic views across distant bushland. Offering an idyllic family retreat in enviably secluded surrounds, the home is set within walking distance of Quinn Nature Reserve, Olinda Creek Trail and buses to Lilydale. Showcasing lofty exposed beam ceilings and wide floating timber flooring throughout, the impeccably presented home features an inviting open plan layout. A generous living room with a wood burning heater is set alongside a spacious separate dining area, with each space flowing out to an expansive timber decking. Enjoying a sundrenched north-facing orientation, the decking offers elevated treetop views and plenty of space for outdoor entertaining. At the heart of the home, an airy skylit kitchen includes ample drawer storage, a freestanding electric oven and cooktop, a dishwasher, and an elegant farmhouse sink. On the main floor, three light-filled bedrooms are complemented by a renovated central bathroom with a semi-frameless glass shower, a separate bathtub, and a separate W/C. Privately poised on the upper level, a generously proportioned master bedroom includes an oversized fully-fitted walk-in wardrobe, and opens out to an elevated balcony with striking bushland views. Featuring gas ducted heating, split system air conditioning on both levels, an alarm system, an alarm system and a lock-up shed, the home also includes ample off-street parking, with plenty of space for a boat, caravan or trailer. Zoned for both Birmingham Primary School and Yarra Hills Secondary College, the location is also within easy reach of Lillydale Lake, Billanook College, and both Mooroolbark and Kilsyth shopping.