

**1011/228 La Trobe St, Melbourne, Vic 3000**



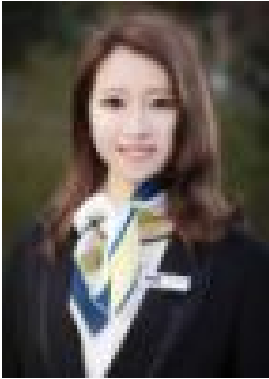
**Apartment For Sale**

Saturday, 13 April 2024

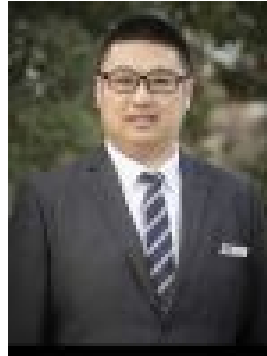
1011/228 La Trobe St, Melbourne, Vic 3000

**Bathrooms: 1**

**Type: Apartment**



Yana Huang



Leo Li

0430185637

## Contact Agent

Aurora Tower provides unparalleled access to the best that Melbourne has to offer. It has a cosmopolitan cluster of restaurants, an array of food and beverage offerings, retail precincts and street-level arcade. Opening with crisp modern tones and abundant natural light, the open-plan layout introduces a comfortable living/dining zone, flowing into the kitchen with stone benches & ample cupboard space, gas stainless steel appliances, a modern & sparkling central bathroom, bedrooms with wall-to-wall carpet. Being in the heart of Melbourne is suitable for both investors and owner occupiers with Southern Cross Station and Tram stops at your door's step. Just a short stroll to Melbourne University, RMIT City Campus, Queen Victoria Market, Flagstaff Garden, Marvel Stadium & many more. • Currently tenanted - \$2,998 PCM • Leased end 27 Feb 2025 Amenities access on the 8th floor includes: 1. Exercise Gym 2. Swimming pool 3. Spa 4. Sauna bath 5. Steam bath 6. Karaoke rooms 7. Outdoor Barbeque places 8. Private rooms for visitors For more details and inspection time, please text or call Yana Huang on 0430 725 357 Disclaimer: We have in preparing this document used our best endeavours to ensure that the information contained in this document is true and accurate, but accept no responsibility and disclaim all liability in respect to any errors, omissions, inaccuracies or misstatements in this document. Prospect purchasers should make their own enquiries to verify the information contained in this document. Purchasers should make their own enquiries and refer to the due diligence check-list provided by Consumer Affairs. Click on the link for a copy of the due diligence check-list from Consumer Affairs. <http://www.consumer.vic.gov.au/duediligencechecklist>