

**102/2D Wharf Road, Melrose Park, NSW 2114**



**Sold Apartment**

Wednesday, 20 March 2024

102/2D Wharf Road, Melrose Park, NSW 2114

**Bedrooms: 2**

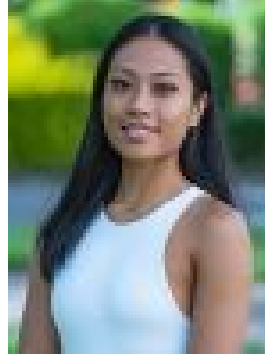
**Bathrooms: 2**

**Parkings: 1**

**Type: Apartment**



Dylan Choe  
1300858221



Hintha Mya  
1300858221

**\$815,000**

Spacious, private and stylish living in Melrose Park doesn't get any better than in this impressively proportioned single-level residence that sits conveniently on the border of Ermington and West Ryde. Offering a fresh and carefree lifestyle with streaming natural light and leafy outlooks, it makes a quality property of undeniable appeal and has been well-designed to offer a modern urban home in the Melrose Park smart living community.- A northerly aspect, large windows and excellent natural light- Expansive courtyard-sized terrace, perfect for entertaining- Bright, airy and open interiors featuring cool tiled flooring- Both bedrooms are double-sized and have courtyard access- The main bedroom has a study area, built-ins and ensuite- Contemporary gas kitchen, designer bathroom, internal laundry- A security car space plus a lock-up storage cage in the basement- Air-conditioning, intercom, lift access and EV charging stations- Shared rooftop terrace and garden with panoramic viewsA fantastic prospect for city professionals, investors or a low-care scale-down opportunity, this superb home is well-connected with city-bound buses just footsteps away. It's also within close range of Parramatta CBD with a free shuttle bus service to Meadowbank train station and Meadowbank Ferry Wharf