

**102 Grays Point Road, Grays Point, NSW 2232**

**House For Sale**

Thursday, 30 May 2024



102 Grays Point Road, Grays Point, NSW 2232

**Bedrooms: 4**

**Bathrooms: 2**

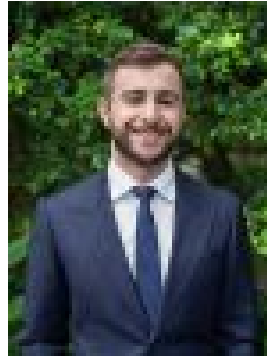
**Parkings: 4**

**Area: 651 m2**

**Type: House**



Dino Salvatore  
0295258066



Marcus Salvatore  
0433388862

## Auction

AUCTION - 25th June 2024 - 6:00pm - Cronulla RSL Nestled within the tranquil embrace of Grays Point, this distinguished North facing four-bedroom residence has been meticulously designed to create a family haven of comfort & relaxation without compromise. The all-inclusive layout spans over two tiered levels offering an array of indoor-outdoor living areas carefully considered to harmonize the serene backdrop of the Port Hacking River & Royal National Park. The exterior features a wrap-around yard comprising of covered verandahs, a garden shed, solar panels and a level lawn encased by manicured gardens to further accentuate the home's functionality & visual appeal. Main features include: • Living & dining area illuminated by natural light & fitted with glass bi fold doors that transition out to the covered alfresco with views • Open plan kitchen fitted with ample cabinetry, large breakfast bar, stone benchtops, walk-in pantry & electric Westinghouse appliances • Expansive family room on entry level featuring split system air conditioning & opening out to paved wrap around courtyard • Generous master suite on lower level with up-to-date ensuite, hanging closet & direct access to rear outdoor terrace • Three additional bedrooms fitted with built-in robes, ceiling fans & large windows to capture the natural sunlight • Central main bathroom featuring stained glass skylight, heated towel rail & a separate bath & shower • Covered entertaining alfresco with retractable shades & embracing elevated views of the Hacking River & Royal National Park • Wrap around paved terrace with garden shed, retractable clotheslines, manicured gardens & level grassed area at rear • Double lock up garage with auto door, storage & water closet + multiple off-street parking options available for multiple vehicles • Approximate Land Size: 651sqm Set in the heart of Grays Point within moments to local waterways, Swallow Rock Boat Ramp & Reserve, Royal National Park, Jack Gray cafe, Grays Point Public School & in the Kirrawee High School catchment.