

**1025 Castlereagh Highway, Dunedoo, NSW 2844**



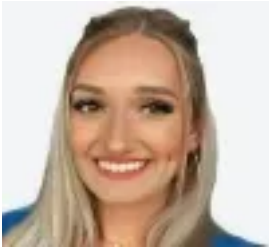
**Sold Residential Land**

Monday, 17 June 2024

1025 Castlereagh Highway, Dunedoo, NSW 2844

Area: 4 m2

Type: Residential Land



Savannah Lubke  
0438969532

**\$89,500**

Righto, listen up ya drongos! Sick of ya neighbours whingein' about yer whipper snipper at 7am? Here's yer chance to grab a bloody ripper 10-acre block for a steal! These beauties offer complete privacy – ya won't see another soul except the roos unless ya want to. New fences all around keep ya mates' stray cattle outta ya beer. Easy to get to – chuck it in the ute, no fancy 4WD needed. Sealed road all the way. The land's a beaut mix of shady trees and open space for chuckin' a roo or two on the barbie. And the views? Top notch! Wanna escape the rat race but still be close to town? Dunedoo's a cracker – 5 minutes down the bitumen, and it's got everything ya need: shops, schools, servos, cafes, the works. There's even a hospital if ya forget ya sunscreen or if the roo gets a little wild on the BBQ! Don't miss out on this fair dinkum opportunity! Call Tom to snag a weekend inspection or for more info. This one's a beaut, don't be a dill – call now! Don't come knockin' on Tom's door like a galah unless you called first. This ain't no come-one-come-all barbie, it's appointments only on weekends. Save yourself the trip and call Tom to suss it out. To get Tom's number text this code \*GKLS\* to 0472 782 321 (no call no.)