

103/653 George Street, Sydney, NSW 2000

Sold Studio

Friday, 1 September 2023

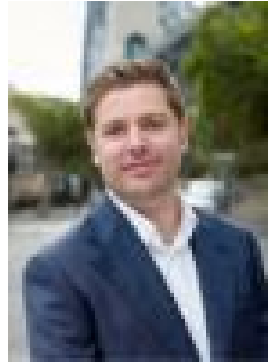
103/653 George Street, Sydney, NSW 2000

Bathrooms: 1

Type: Studio



Brenden Taliana
0292411288



Bryn Fowler
0423663663

\$439,000

Presenting a fantastic opportunity to own an incredible apartment located in the premier Mantra Sydney Central building, perfect for SMSF or investors looking to earn great returns. Positioned for walk-to-everything convenience with World Square shopping complex only a 160m stroll away and easy access to Belmore Park.- Estimated net returns of \$45,803.20 - \$58,005.20 p/a with short term leasing- Great flexibility to short term let or lease through Mantra – your choice!- Take advantage of the rapidly improving accommodation market- Well appointed, contemporary interiors with balcony, low strata levies - Centrally located building, with 24hr reception and on-site restaurant- Footsteps to the Capital Theatre, Chinatown & Light Rail at doorstep- Outgoings P/Q - Strata: \$967, Council: \$237, Water: \$19 p/q – approx.*For Investment OnlyCall Brenden Taliana on 0402 634 828 or email brenden@sydneycoveproperty.com.All information contained herein is gathered from sources we deem to be reliable, however, we cannot guarantee its accuracy and interested persons should rely on their own enquiries.