

103/77 Galada Avenue, Parkville, Vic 3052



Apartment For Sale

Saturday, 24 February 2024

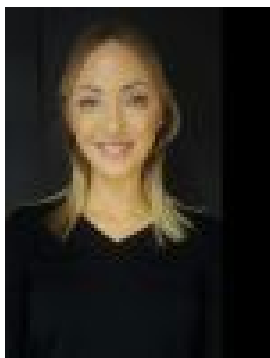
103/77 Galada Avenue, Parkville, Vic 3052

Bedrooms: 2

Bathrooms: 2

Parkings: 1

Type: Apartment



Monique Hoysted
0407791995

\$485,000 - \$500,000

This large two bedroom, two bathroom plus study apartment with leafy parkland views is positioned in a quiet and convenient location, less than 4km from Melbourne's thriving CBD, connected to world-class universities, sporting venues, arts and entertainment. This impressive apartment offers a spacious floor plan, with a light filled master bedroom including BIR's and ensuite, 2nd bedroom with BIR's, a large main bathroom, modern kitchen with stainless steel appliances and dishwasher, open plan living/dining area and a balcony fronting Galada Avenue parkland. Further features include laundry facilities, heating/cooling, off-street parking and pool/gym facilities. Features: Unique 20 hectare master planned estate: Fronting parkland with direct linkages to beautiful Royal Park, residents of Thrive enjoy the advantages and tranquillity of having the Parkville Gardens precinct on their doorstep in addition to all the benefits of an inner-city location. Education: Established educational facilities including two of Australia's finest tertiary institutions, are all nearby. The University of Melbourne is approx. 3.1km away (with direct access via Bus 505 on Cade Way) and RMIT (Royal Melbourne Institute of Technology) sits conveniently on the nearby CBD fringe. Medical: Widely regarded as Melbourne's premier medical precinct, Parkville contains numerous world-class medical facilities including the Royal Melbourne Children's Hospital, the Royal Women's Hospital and the new, billion-dollar Victorian Comprehensive Cancer Centre, the largest cancer research centre in Australia. Accessibility: Trains are just minutes away right in the heart of picturesque Royal Park, or just 8-10 minute walk (approx.) to Flemington Bridge Station; the No. 55 tram stops in Royal Park; and Bus 505 which travels directly to the University of Melbourne and the CBD, stops on Cade Way, 350 metres from the front lobby.