

**103/88 Epping Road, Epping, Vic 3076**

**Apartment For Sale**

Tuesday, 2 April 2024

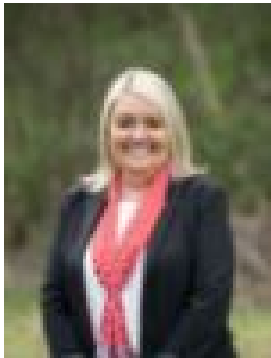
103/88 Epping Road, Epping, Vic 3076

**Bedrooms: 2**

**Bathrooms: 1**

**Parkings: 1**

**Type: Apartment**



Lina Parker

0412259375

## Contact Agent!

Nestled in the heart of Epping is this modern apartment perfect for first home buyers or investors alike. Consisting of two bedrooms with built in robes, modern bathroom, large open plan living/dining area overlook a generous balcony which creates an attractive outdoor/indoor living zone perfect for entertaining or enjoying a quiet place to relax. A well-equipped kitchen, including stainless steel appliances and a dishwasher complete the package. Extras including split system heating & cooling, laundry, security intercom and internal secure access to the undercover parking with car space on title, storage cage and so much more. The Lyndarum estate across the road gives you the ideal location. Short distance to schools, train, Costco, Pacific Epping, Westfield Plenty Valley and so much more. The price guide for this property is Price Upon Application, offering a fantastic opportunity for those looking to secure a beautiful home in the heart of Epping. Don't miss out on this incredible opportunity - contact us today to arrange a private inspection. Stockdale & Leggo believes this information is correct but it does not warrant or guarantee the accuracy of the information. You should make your own enquiries, check the information and/or engaged the services of a qualified contractor. Certain information has been obtained from external sources and has not been independently verified.