

# 10310/177-219 Mitchell Road, Erskineville, NSW 2043



## Sold Apartment

Thursday, 13 June 2024

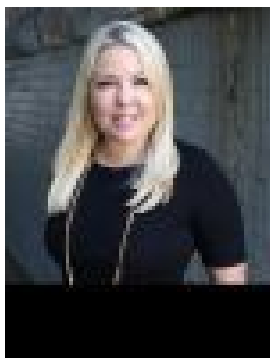
10310/177-219 Mitchell Road, Erskineville, NSW 2043

**Bedrooms: 1**

**Bathrooms: 1**

**Parkings: 1**

**Type: Apartment**



Melissah McCaffery J P  
0408601495

**\$850,000**

**SOLD OFF MARKET - ANOTHER COMPLEX RECORD!** Desirably positioned in the revered 'Sydney Park Village' and offering exceptionally peaceful and private in/outdoor living, this generously proportioned one bedroom lifestyle apartment is the perfect hybrid of resort-style ambience and optimum convenience. Double brick & quality building Private terrace offering optimum privacy & leafy internal outlook Well-appointed gas kitchen w/ s/s appliances & plentiful storage Large sun drenched bedroom w/ floor-to-ceiling glass, BIR & direct balcony access Contemporary bathroom w/ tub & separate laundry room w/ dryer Secure undercover parking, ample visitor parking & 24 hour on-site security Currently leased at \$680/week Strata levies approx. \$2300/quarter Placed just steps from the hip Erskineville Village, the eat streets of King and Crown Streets and minutes to The Grounds, Campos, Rosetta Stone Bakery, Bread & Circus, and Fratelli Fresh, Sydney Park Village is one of the most sought after resort style buildings in inner Sydney. Offering incomparable facilities including 24 hour security, 60 visitor car spaces, outdoor pool, two tennis courts, gym and indoor heated lap pool - immerse yourself in a sanctuary away from the urban buzz.