

1046 Nowendoc Road, Mount George, NSW 2424



Sold Lifestyle

Saturday, 23 September 2023

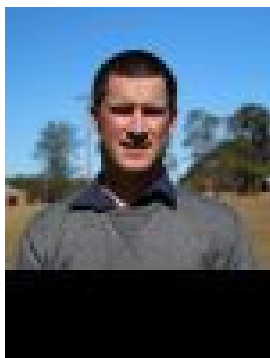
1046 Nowendoc Road, Mount George, NSW 2424

Bedrooms: 1

Bathrooms: 1

Area: 79 m2

Type: Lifestyle



Natt Lowman
0438443173

\$656,000

This Impressive 79.3ha block is found only 18km's out of Wingham has plenty of rugged charm, it's the perfect place for an idyllic retreat or to build your dream country home. High on a hill and sitting pretty is a great homesite with spectacular views to the east, currently there is basic camp-style accommodation. The property is fenced with five dams, long frontage to Charity Creek and currently running 20 bullocks, however, could handle plenty more. The land, roughly 75% cleared, ranges from creek flat & undulating to steeper & timbered and is well serviced by internal 4x4 tracks. This property is a real treat and will have you impressed, come take a look. Disclaimer: Information contained on any marketing material, website or other portal should not be relied upon. You should make your own enquiries and seek your own independent advice with respect to any property advertised or the information about the property.