

**105/100 Bowen Terrace, Fortitude Valley, Qld 4006**



**Apartment For Sale**

Tuesday, 28 May 2024

105/100 Bowen Terrace, Fortitude Valley, Qld 4006

**Bedrooms: 2**

**Bathrooms: 2**

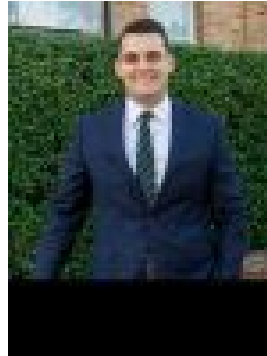
**Parkings: 1**

**Area: 149 m2**

**Type: Apartment**



Ruby Kiriya-Brown  
0733580605



Josh Brown  
0733580662

## For Sale

Positioned on the highest point of Bowen Terrace and overlooking the iconic Story Bridge, Petrie Point Apartments is one of the area's finest residential developments. Located right on the residential cusp of New Farm and Fortitude Valley, Petrie Point is predominantly known for its premium location and five-star resort style facilities. Petrie Point Apartments is synonymous for luxurious living, here you can enjoy the lush tropical gardens, library, meeting rooms, pool, sauna, spas, gym and BBQ area. Security is extremely high with the use of controlled gated entrances, CCTV cameras, intercom, restricted lift access, Security Guard and On Site Managers. This property features but is not limited to:

- Spacious 149m<sup>2</sup> floor plan with huge outdoor entertaining area
- Extremely private, quiet and well designed
- Private sunroom entrance
- Open plan kitchen, dining and living area flow to the outdoors
- Huge 47sqm private courtyard with a leafy outlook
- Great connectivity between indoor/outdoor living
- Lovely relaxing tropical outlook
- Master suite with walk in robe, ensuite & access to the balcony
- Second bedroom well separated with built in robes
- Built in laundry
- Car space in a secure garage

You couldn't get a better location than this. Here, you are just moments away from some of the area's finest offerings including the Howard Smith Wharves, James Street precinct, New Farm Park, Gasworks, Fortitude Valley, New Farm Cinema's, the River Walk, boutique shopping, cafes, restaurants, transport and just a short stroll to the CBD. If you are looking to buy or invest in the Brisbane market, now is the time to be doing so. With so much exciting growth happening in the inner city areas, there is so much value in apartment's like this one at Petrie Point. With never to be built out views of the Story Bridge, CBD and Brisbane River, Petrie Point Apartments is positioned right in the hub of the Howard Smith Wharves development. To obtain further information or to arrange a private inspection, please contact Ruby Brown on 0450 220 037 or Josh Brown on 0403 139 397.