

**105/133 Goulburn Street, Surry Hills, NSW 2010**

**BresicWhitney**

**Sold Apartment**

Thursday, 14 December 2023

105/133 Goulburn Street, Surry Hills, NSW 2010

**Bedrooms: 2**

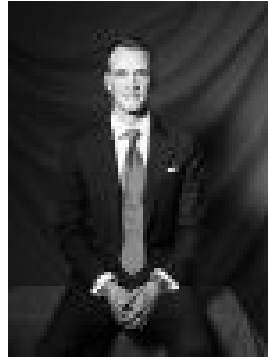
**Bathrooms: 2**

**Parkings: 1**

**Type: Apartment**



Patrick O'Brien  
0293565555



Josh Fleming  
0413175060

**\$1,750,000**

On the first floor of the iconic Mark Foy warehouse, this is a beautiful example of a converted building, with a 2-level layout and industrial-style windows adding to the ambiance. The oversized floorplan delivers impressive interior space and a total of 112sqm on title, moments to Museum train station, the CBD, Hyde Park and Haymarket. Amid the area's best pockets of cool dining and lifestyle spots. Free Strata Report at [bw.com.au](http://bw.com.au) Highlights\* Iconic building & warehouse conversion\* Tasteful appointments over 2 large levels\* 2 beds w/ ensuites + powder room + l/dry\* Leafy green outlooks all round, ducted a/c\* Original windows, renovated oak flooring\* Generous open living & covered balcony\* Stone kitchen w/ integrated apps, gas, d/w\* Park views, so close to Museum Station\* Secure parking, pool, gymnasium, intercom\* One of area's best walk-everywhere spots