

105 Muru Drive, Glenmore Park, NSW 2745

BESPOKE. REALTY.

House For Sale

Wednesday, 29 November 2023

105 Muru Drive, Glenmore Park, NSW 2745

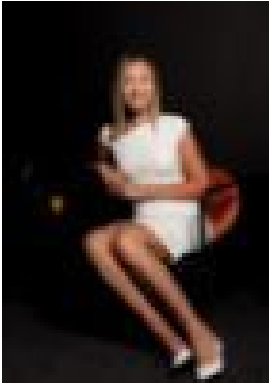
Bedrooms: 4

Bathrooms: 2

Parkings: 2

Area: 659 m2

Type: House



Briannan Nand
0490160662



Marie Grima
0433788820

Auction Unless Sold Prior

Perfectly situated in a prime location in the sought-after suburb of Glenmore Park. This four bedroom family home is sure to impress all prospective buyers. Features: - Master bedroom with walk-in robe and ensuite- Remaining three bedrooms with built-in robes- Formal lounge/dining areas + additional family area - Kitchen with ample bench space and gas cooking - Undercover entertaining area overlooking spacious backyard - Split system air conditioning - Drive through double garage Location: - 900m to Glenmore Park High School - 1.1km to Bethany Primary School - 1.2km to Glenmore Park Primary School - 1.3km to Glenmore Park Shopping Centre - 1.7km to Caroline Chisholm College