

106/3 George Street, Warwick Farm, NSW 2170

CENTURY 21

Apartment For Sale

Wednesday, 10 April 2024

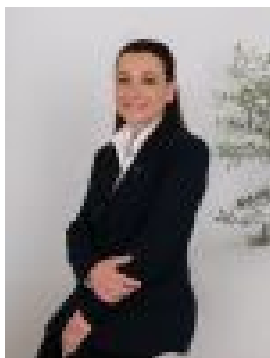
106/3 George Street, Warwick Farm, NSW 2170

Bedrooms: 2

Bathrooms: 2

Parkings: 1

Type: Apartment



Sonia Poulos
0296015944

\$510,000 to \$540,000

Expand your entertaining potential with this courtyard apartment that seamlessly combines indoor and outdoor living, ideal for sunset lounging and alfresco dining all from the comfort of your own home.- Two large bedroom's with built in wardrobes & access to courtyard- Master bedroom with ensuite- Spacious kitchen with island bench and ample pantry space- Open plan living and dining zones- Large accessible courtyard with seamless indoor to outdoor flow which is rare to come by- Security car space plus storage cage- Possible rental return \$580.00 per week- Strata \$871.00p.q, Council \$320.00p.q, Water \$171.00p.q- Conveniently located within a sought after location with a range of restaurants and amenities at your doorstepDISCLAIMER: While Century21 Combined Liverpool has made every effort in preparing this information and used their best endeavours to ensure that the information contained is true and accurate, we accept no responsibility and disclaim all liability in respect of any errors, inaccuracies or misstatements contained herein. Century21 Combined Liverpool encourages and advises all prospective purchasers to make their own inquiries in order to verify the information contained herein.