

106 Rosella Avenue, Werribee, Vic 3030



Sold House

Tuesday, 5 September 2023

106 Rosella Avenue, Werribee, Vic 3030

Bedrooms: 3

Bathrooms: 1

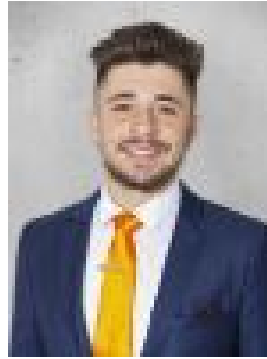
Parkings: 3

Area: 509 m2

Type: House



Tony Vercher
0397423333



James Doxas
0459333232

\$460,000

Situated in the heart of Werribee surrounded by an abundance of amenities, the location can not get any more convenient. Only a stone's throw away from the Werribee Plaza Shopping Centre and Werribee Village Shopping Centre, you are situated in prime location, boasting a copious number of parks, public transport and only a short distance from the Wyndham Central College, Heathdale College and Wyndham Park Primary School. Set upon a great sized allotment of 509m² (approx.), this home comprises of three generously sized bedrooms, two of which feature built in robes, while floorboards are featured throughout the home. All of the bedrooms are serviced by the central bathroom with a bath and separate toilet. As you walk through the home you are also greeted with a fair-sized lounge room serviced by ducted heating and evaporative cooling. As you make your way through to the heart of the home, you will find the kitchen incorporates open plan living that overlooks the dining and meals area, and features an abundance of natural light, ample storage as well as a gas cooktop, oven, and a stainless-steel range hood. Step outside and bask in the sunlight under the pergola that overlooks the vast backyard with plenty of room for a garden of your own. The home also comprises of a single lock up garage with drive-through access to the backyard. This home is a great way to start building your equity with potential to put your own stamp on it, and will appeal to everyone including first home buyers, young families and investors. **DISCLAIMER:** All stated dimensions are approximate only. Particulars & photos given are for general information only and do not constitute any representation on the part of the vendor or agent. *Please note: Any open times displayed are current at the time of publishing but may change at any time. We recommend checking the listing prior to attending to confirm if the open home information is still current.