

**107/78-80 Marine Parade, Kingscliff, NSW 2487**



**Sold Apartment**

Tuesday, 15 August 2023

107/78-80 Marine Parade, Kingscliff, NSW 2487

**Bedrooms: 3**

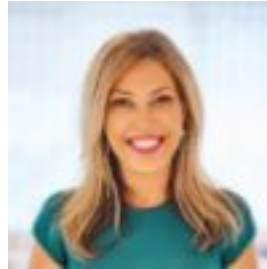
**Bathrooms: 2**

**Parkings: 1**

**Type: Apartment**



Erin Nielsen  
0266741000



Amy Sanderson  
0266741000

**\$745,000**

\*\*\*Inspections are NSW time\*\*\*Looking for the ultimate in beachfront lifestyle living, look no further than this fantastic apartment, located in the Balinese inspired Paradiso Apartment Complex, right in the heart of Kingscliff. Just steps away from the beach and creek, you can spend your days soaking up the sun or exploring some of the many cafes, bars and eateries this coastal haven has to offer, and all right on your doorstep. Kingscliff being the central hub and truly the gem of the Tweed Coast has strong, consistent capital growth only to be underpinned by the new \$723m Tweed Valley Hospital nearing completion. NOW IS THE TIME TO GET A Foothold in this bouyant Kingscliff Market Offering strong holiday letting returns, this property is the perfect weekender/holiday home with additional income stream. Neat and tidy, well presented and there is still scope to add immediate value by putting your own stamp on it. DO NOT DELAY, GROUND FLOOR MARINE PARADE APARTMENTS, IN THIS CENTRAL LOCATION ARE IN HIGH DEMAND AND WILL NOT LAST LONG! WHY WE LOVE IT - Beachfront location and low maintenance lifestyle - Ground floor, no stairs (lift from carpark) - Air-conditioned, open plan living with plenty of space to entertain - Well appointed kitchen boasting expansive island bench and ample storage - Well proportioned bedrooms all with built in robes and ceiling fans - Master bedroom with ensuite and rear balcony allowing summer breezes to flow - Pet friendly complex - with Body Corp approval - Allocated car space in secure basement carpark - Strong holiday letting returns on offer RESORT FACILITIES - Tropical pool - Outdoor heated spa - Gymnasium - Secure basement parking with lift to all levels - Onsite manager and reception desk WHERE TO FROM HERE - 3 mins to M1 North and South bound - 35 mins to Byron Bay - 15 mins to Gold Coast International Airport - 2 mins to Tweed Valley Hospital - opening Jan 2024 - 80 mins to Brisbane CBD and Airport Call Erin Nielsen 0414 259 605 or Amy Sanderson 0403 851 003 to arrange an inspection. Disclaimer: All information (including but not limited to the property area, floor size, price, photos, address and general property description) is provided as a convenience to you and has been provided to LJ Hooker by third parties. LJ Hooker is unable to definitively confirm whether the information listed is correct or 100% accurate. LJ Hooker does not accept any liability (direct or indirect) for any injury, loss, claim, damage or any incidental or consequential damages, including but not limited to lost profits or savings, arising out of or in any way connected with the use of any information, or any error, omission or defect in the information, contained on the Website. Information contained on the Website should not be relied upon and you should make your own enquiries and seek legal advice in respect of any property on the Website. Prices displayed on the Website are current at the time of issue, but may change.