

# 108 Glenmore Road, Park Avenue, Qld 4701

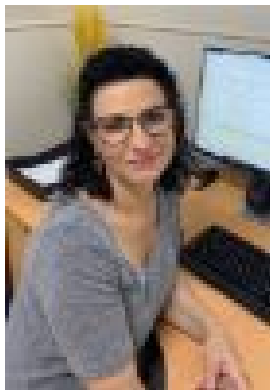
## Residential Land For Sale

Tuesday, 9 April 2024

108 Glenmore Road, Park Avenue, Qld 4701

Area: 460 m2

Type: Residential Land



Rossana Winters

## **Offers over \$170,000**

Are you looking for a block in town to build on? Look no further. This 460-square-metre allotment on Glenmore Rd, Park Avenue, is close to everything, making it ideal for building and setting up an office business. Also, it is a perfectly good opportunity to build your dream home or even a duplex! Great location - and ideal - and at this price, you'll want to get a look in! Call Rossana on 0477 868 936 to have a look or make an offer.