

**109/29-35 Burlington Road, Homebush, NSW 2140**



**Sold Apartment**

Thursday, 4 April 2024

109/29-35 Burlington Road, Homebush, NSW 2140

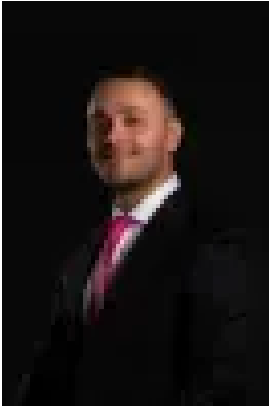
**Bedrooms: 1**

**Bathrooms: 1**

**Parkings: 1**

**Area: 68 m2**

**Type: Apartment**



Elie Semrani  
0297632277



Adrian Jian-Sheng Wu  
0297632277

## Contact agent

Strata Levy: \$637 p/q Approx. Rental Return: \$650 p/w Approx. Nestled on Level 1 of the prestigious 'Vogue' complex in the vibrant heart of Homebush, this exquisite one-bedroom apartment epitomizes modern luxury living, designed for those who appreciate refinement and sophistication. Upon entering, you are greeted by a spacious open-plan living and dining area, filled with natural light and seamlessly extending to a sun-drenched entertainer's balcony. The generously sized bedroom promises comfort and style, featuring plush carpeting, a built-in wardrobe, and the convenience of direct balcony access. The modern kitchen boasts a Caesar-stone benchtop, mirrored splashback, and high-end SMEG appliances integrated into sleek cabinetry, complemented by a dishwasher and abundant storage space for culinary enthusiasts. The bathroom features floor-to-ceiling tiles, a rain shower, and sophisticated finishes. Other highlights include an internal laundry, air conditioning, downlights, shadow line ceilings, and secure underground parking for one vehicle plus a storage cage. Situated just a 3-minute walk from an array of shops, cafes, and the convenience of Homebush Station, the property offers the tranquility of suburban living as well as ease of transport. Sydney CBD is a mere 20-minute drive away, and Parramatta CBD, Burwood Westfield, North Strathfield Bakehouse Quarter, Bicentennial Park, and Flemington Markets are close by. This property promises unparalleled convenience. Disclaimer: We have in preparing this document, used our best endeavours to ensure that all the information contained in this document is true and accurate, but accept no responsibility and disclaim all liability in respect of any errors, omissions, inaccuracies or misstatements contained in this document.