

10A Jillian Street, Mooroolbark, Vic 3138



House For Sale

Wednesday, 29 November 2023

10A Jillian Street, Mooroolbark, Vic 3138

Bedrooms: 3

Bathrooms: 2

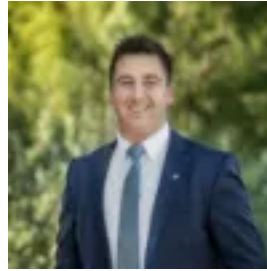
Parkings: 2

Area: 432 m2

Type: House



Ash Thompson
0398706211



Alan Hodges
0398706211

\$750,000 - \$825,000

Peacefully secluded at the rear of the block with its own separate driveway, framed by manicured landscaped gardens, this impeccably presented single level home offers an inviting contemporary lifestyle. Ideally laid out for young families and downsizers alike, the two-year-old home presents quality low maintenance finishes with a private north-facing backyard and deck. An expansive open plan living and dining area boasts lofty high ceilings and elegant full-height sheer drapery, flowing out through glass stacker doors to a sundrenched timber deck. Adjacent, family-friendly lawns are bordered by leafy garden beds, creating a private and secure space for relaxed outdoor living. The home's gardens also include two bay trees and lemon, lime and orange trees. A showpiece contemporary kitchen comprises sleek stone benchtops, a breakfast bar with feature pendant lighting, abundant soft-close storage space with a concealed appliance cabinet, and a gleaming 900mm freestanding oven with a five-burner gas cooktop. The light-filled master bedroom includes a spacious walk-in wardrobe and a luxe fully-tiled ensuite with a semi-frameless glass waterfall shower and chic matte black tapware. Two additional bedrooms are each equipped with built-in wardrobes, and are complemented by a skylit central bathroom with floor-to-ceiling tiling, a semi-frameless glass waterfall shower, a separate bathtub and a separate W/C. Featuring wide floating timber flooring, ducted Daikin reverse cycle refrigerated air conditioning and heating, contemporary ceiling fans, roller blinds and excellent inbuilt storage, the home also includes a remote double lock-up garage with epoxy flooring and internal access, plus space for additional off-street parking. Positioned just a short stroll from Carrum-Warburton Trail, Carronvale Playground and Summerhill Off Leash Dog Park, and zoned for both Mooroolbark East Primary School and Mooroolbark College, the location is also within easy reach of Lillydale Lake, Mooroolbark Station, and local Mooroolbark shopping and restaurants.