

11/129 Merthyr Road, New Farm, Qld 4005

Ethel & Florence

Apartment For Sale

Wednesday, 8 May 2024

11/129 Merthyr Road, New Farm, Qld 4005

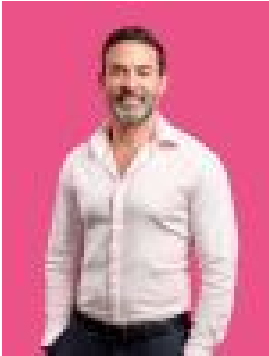
Bedrooms: 1

Bathrooms: 1

Parkings: 1

Area: 43 m2

Type: Apartment



Jeff Jordan

0439005705

For Sale

This trendy and well-positioned apartment is located on the top floor of a low-rise brick complex in New Farm. This one-bedroom apartment boasts a southeast aspect that allows plenty of natural light to fill the interior, creating a bright and inviting atmosphere. One of the highlights of this apartment is its convenient location within walking distance of various attractions and amenities that New Farm has to offer. This includes proximity to restaurants, cafés, shops, and transportation options, making it an ideal choice for those who want to experience the vibrant inner-city lifestyle. The interior of the apartment is described as neat and tidy throughout. The kitchen is functional with attractive cabinetry, and the overall design promotes an indoor-outdoor lifestyle. Additional features include ceiling fans in the apartment, air conditioning in the main living area for climate control, and a car space. Additionally, the low body corporate fees assist in keeping the outgoings to a minimum. This apartment is positioned in close proximity to various popular spots like- Howard Smith Wharves- James Street Precinct- New Farm Park- New Farm Deli- New Farm Cinema. Overall, this desirable apartment combines a trendy New Farm lifestyle with convenient living.