

**11/43 Hampton Circuit, Yarralumla, ACT 2600**



**Apartment For Rent**

Friday, 26 January 2024

11/43 Hampton Circuit, Yarralumla, ACT 2600

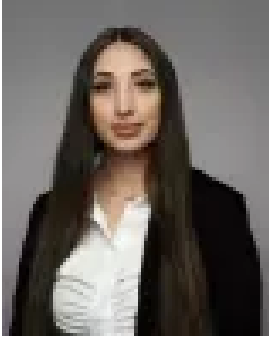
**Bedrooms: 2**

**Bathrooms: 2**

**Parkings: 2**

**Area: 90 m2**

**Type: Apartment**



Nimra Naz

0262952433

**\$740 per week**

Set in an ultra-convenient location, this spacious two-bedroom apartment is set on the 2nd floor of a AVVA Apartments. With a pleasing urban outlook, this delightful apartment is sure to impress. If you were to describe this unit with one word, it would be "Convenience". This unit presents beautifully, its quiet, secure, and spacious enough for tenants coming from all walks of life. - Set on the 2nd floor of a boutique complex - With an abundance of natural light- Open plan living/dining area featuring wall-to-wall glass- Two well scaled bedrooms, both includes a built-in wardrobe- Ensuites for each bedroom, triple glazed windows to bedrooms- Designated dining and living areas leading to a private balcony- Premium stone kitchen, appointed with quality cooking appliances- High ceilings and quality timber flooring add further appeal- Double and triple glazed windows- Internal laundry facilities - Double car space- Beautifully maintained complex, secure intercom, lift access- Close proximity to Shopping Centers and everyday amenities Available: 21st March 2024 Tenants must seek Landlord's consent for a pet Energy Efficiency: 6.0 The property has a valid exemption and is not required to comply with the minimum ceiling insulation standards. WISH TO INSPECT? 1. Click on the "BOOK INSPECTION" button 2. Register to join an existing inspection 3. If no time offered, please register so we can contact you once a time is arranged 4. If you do not register, we cannot notify you of any time changes, cancellations or further inspection times. \*Please note all care has been taken in providing the marketing information, Blackshaw Manuka will not be held liable for any errors in typing or information and you should rely on your own investigation for accuracy.