

11/48 Florence Taylor Street, Greenway, ACT 2900

ARCHER

Townhouse For Sale

Thursday, 6 June 2024

11/48 Florence Taylor Street, Greenway, ACT 2900

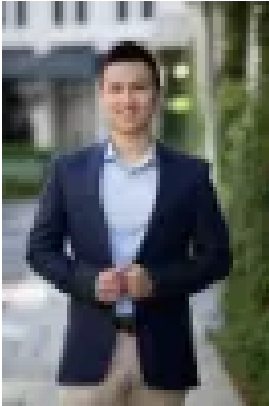
Bedrooms: 2

Bathrooms: 1

Parkings: 1

Area: 97 m2

Type: Townhouse



Alex Wang

0262625232

\$599,000+

Discover serene living on the peaceful Foreshore of Lake Tuggeranong, situated just steps away from the bustling South Point Shopping Centre. This prime location offers a rich selection of cafes, restaurants, and essential retailers including Woolworths, Coles, Target, Kmart, and BigW. The newly introduced 'The Point' enhances the local conveniences. Nearby, enjoy the scenic Tuggeranong Lake, the town park, Club Lime, and the Greenway Water Leisure Centre. Complemented by surrounding cyclist paths, this home is the ideal mix of urban convenience and natural beauty. Experience tranquility in this beautifully crafted residence, featuring an easy-care back yard, perfect for gardening enthusiasts, social gatherings, or a secure play area for children and pets. Step inside to an open-plan living and dining area, filled with natural light and offering plenty of space for relaxation and entertainment. The kitchen kitchen shines with ample storage and sleek stainless steel appliances. The residence features two generously sized bedrooms, each offering a peaceful sanctuary with built-in wardrobes for convenient storage. The bathroom is spacious, providing a luxurious and practical experience. Skylights in kitchen and bathroom to introduce more natural lights into the property making it bright. This versatile home appeals to downsizers, first-time buyers, and savvy investors alike. Don't miss the opportunity to make this exceptional property yours. Contact us today for more information and to arrange an exclusive inspection. Your dream home is waiting!

Features:

- Single level floor plan with spacious open living space
- Large easy-to-maintain backyard
- Fresh paint throughout
- Floorboards throughout
- R/C Aircon
- Ample cupboard and storage space in kitchen
- Stainless steel appliance
- Skylights in the bathroom and kitchen
- Automatic garage with internal access
- Both bedroom features built-in wardrobe
- Close proximity to South Point shopping centre - home to cafes, restaurants, Woolworths and Cole's, Target, Kmart and BigW, and newly opened 'The Point'
- Close proximity to Tuggeranong town park, Club Lime and greenway water leisure centre

Particulars (all approx.)

Living Size: 74 m² + 23 m² backyard
Year Built: 1992
Rent Estimate: \$560/week
Strata: \$444/quarter
Rates: \$613/quarter
EER: 2.0

DISCLAIMER We have obtained all information provided here from sources we believe to be reliable; however, we cannot guarantee its accuracy. Prospective purchasers are advised to carry out their own investigations and satisfy themselves of all aspects of such information including without limitation, any income, rentals, dimensions, areas, zoning and permits. Any figures and information contained in this advertisement are approximate and a guide only and should not be relied upon for financial purposes or taken as advice of any nature. Individuals, Self-Managed Super Funds, companies, anyone or entity, should make their own inquires and seek their own advice and rely only upon those inquiries and advice. Archer does not guarantee the accuracy of the information above and are not financial advisers or accountants and do not provide any of the above information as advice of any nature.