

11/87-89 Flora Street, Sutherland, NSW 2232



Sold Unit

Wednesday, 12 June 2024

11/87-89 Flora Street, Sutherland, NSW 2232

Bedrooms: 2

Bathrooms: 1

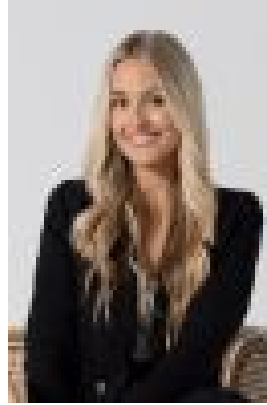
Parkings: 2

Area: 138 m2

Type: Unit



Ben Pike
0295254666



Ilise Nicholson
0409990808

\$776,010

Situated within a quiet complex, this top-floor, north-facing apartment is thoughtfully designed for complete seclusion and offers a lifestyle of convenience and serenity just moments to local schools, shops and sporting fields. Boasting an abundance of natural light and tranquil leafy outlook, this immaculate two bedroom home features a spacious floor plan and double lock-up garage, suitable for investors, first home buyers and downsizers alike.- Open floorplan flows seamlessly to the sunny north facing entertainers balcony- Enjoy ultimate privacy in this exclusive apartment, with very limited visibility from neighbouring units- Sleek, newly renovated kitchen with quality appliances and generous storage and bench space- Two bedrooms with ceiling fans, main with BIR, bathroom with separate bath and shower- The interior features fresh, new carpet installation, adding to the comfort and modern appeal- Large internal laundry, plenty of storage options throughout- Side by side double lockup double garage with ample space for cars, storage and workspace- Conveniently located moments to Sutherland and Kirrawee train station, shops, gyms, library, restaurants and cafes- Experience serene living in a quiet environment, quality sound proofing provides protection from most disturbances

Approximate Quarterly Outgoings: Council Rates: \$358.60 | Water Rates: \$171.41 | Strata Rates: \$983.26

For all your home loan needs call the team at GROW Home Loans on 02 9525 4666 or visit the Pulse website for more