

11 Correa Crescent, Raymond Terrace, NSW 2324



Sold House

Saturday, 24 February 2024

11 Correa Crescent, Raymond Terrace, NSW 2324

Bedrooms: 2

Bathrooms: 1

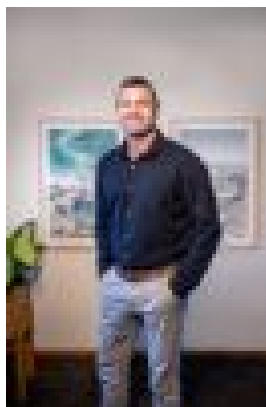
Parkings: 1

Area: 263 m2

Type: House



Liam Osborn
0249873571



Joel Osborn
0249873571

\$557,500

Nestled on a low-maintenance block, this beautifully built home is designed for luxury and comfortable living in a quiet and safe Community Tittle neighbourhood, surrounded by new homes. Situated in a popular part of town, just a short walk to the bus stop and an easy drive to the CBD and Pacific Highway. Key features include:- Two spacious bedrooms feature ceiling fans and large built-in robes that provide plenty of storage space.- An open plan kitchen, dining, and living room with air conditioning, creating a spacious and comfy atmosphere.- Convenient covered alfresco area, seamlessly extending your living space through the glass sliding doors.- The modern kitchen features stone benchtops, a glass cooktop, rangehood, wall oven, and a dishwasher.- Stunning oversized bathroom boasts a wall mount vanity, mirrored shaving cabinet, toilet, bath, and a large open shower.- Large laundry features a second toilet and external access to outdoor washing line.- Blackbutt vinyl planks throughout.- The single garage, complete with a remote door and internal access.- Well-manicured lawns and gardens.- Rainwater tank. Call us today to arrange an inspection. Approximate travel time Newcastle (30 minutes). Newcastle Airport (20 minutes). Nelson Bay (40 minutes). Sydney (2 hours). Council rates: \$219.30 per quarter. Water rates: \$202.99 + usage per quarter. Rental appraisal: \$520 - \$540 per week. Body Corporate fees: \$135.05 per quarter. Property was built in 2022. Disclaimer: "We have obtained all information in this document from sources we believe to be reliable, however, we cannot guarantee its accuracy. Prospective buyers are advised to carry out their own investigations".