

# 11 Crosby Avenue, Pacific Pines, Qld 4211

## Sold House

Thursday, 28 March 2024



11 Crosby Avenue, Pacific Pines, Qld 4211

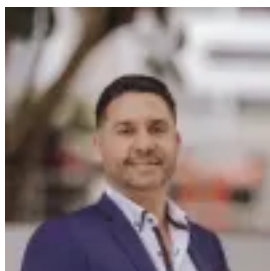
**Bedrooms: 4**

**Bathrooms: 2**

**Parkings: 2**

**Area: 660 m2**

**Type: House**



Tulio Fontes  
0756611782



Adrian Lock  
0756611782

**\$950,000**

On offer is a Steel Frame Home, built to last with the potential for a dual living downstairs! This family home is everything you've been looking for and more. Open plan living and dining that flows seamlessly into a huge outdoor balcony area where you can enjoy BBQs with family whilst enjoying breathtaking views - a true ENTERTAINERS DELIGHT! Located next to a park this home is perfect for families who enjoy the lifestyle that big open spaces can bring. You'll love cooking in the modern kitchen, with gas cooking, smart space cabinetry, stone bench-tops, walk-in pantry, cathedral ceilings and leading brand stainless-steel appliances including dishwasher... The list goes on! With so much on offer and in such an amazing location, your new home in Pacific Pines is ready to move into straight away, renovate to your liking or build on the potential on offer. This beautiful home features: \* 3 large bedrooms with air-con + Office or 4th bedroom \* MASSIVE Master bedroom with air-con, large walk in wardrobe and ensuite \* Spacious double lock up garage \* MASSIVE open plan living and dining areas \* Gourmet kitchen with stone bench and stainless-steel appliances \* Second living/media room \* MASSIVE balcony with stunning city and mountain views \* Fully fenced back yard perfect for kids and pets to play \* Solar panels \* 660m2 block next to a park Pacific Pines is strategically positioned where you can enjoy the very best of the Gold Coast has to offer. You are just a short drive from the M1 Motorway, which connects to you to both Brisbane and a short drive to the beach. Here in Pacific Pines you will feel a world away within the relaxed environment yet only a short stroll from the local shopping centres and schools, only 6km to Parkwood train station connecting you to Brisbane and surfers Paradise. \*45 Minutes Brisbane \*25 minutes Surfers Paradise \*4 Minutes Pacific Pines Town Centre \*15 Minutes Dream World/ Movie World With such a fantastic location on offer, we're sure this property will not last long! \*IMPORTANT\* WHILST EVERY CARE IS TAKEN IN THE PREPARATION OF THE INFORMATION CONTAINED IN THIS MARKETING, Grow&Co Property Agents WILL NOT BE HELD LIABLE FOR ANY ERRORS IN TYPING OF INFORMATION. ALL INFORMATION IS CONSIDERED CORRECT AT THE TIME OF ADVERTISING.